

# Recombinant Human LILRA1/LIR-6/CD85i Protein

**Catalog No.:** RP01457 **Recombinant**

## Sequence Information

Species	Gene ID	Swiss Prot
Human	11024	O75019

### Tags

C-His&amp;Avi

### Synonyms

LILRA1;CD85i;LIR-6;LIR6

## Product Information

Source	Purification
HEK293 cells	> 90% by SDS-PAGE.

Calculated MW	Observed MW
51.18 kDa	70-90 kDa

### Endotoxin

&lt; 1 EU/μg of the protein by LAL method.

### Formulation

Lyophilized from a 0.22 μm filtered solution of PBS, pH 7.4, 5% trehalose, mannitol and 0.01% Tween80.

### Reconstitution

Centrifuge the vial before opening. Reconstitute to a concentration of 0.1-0.5 mg/mL in sterile distilled water. Avoid vortex or vigorously pipetting the protein. For long term storage, it is recommended to add a carrier protein or stabilizer (e.g. 0.1% BSA, 5% HSA, 10% FBS or 5% Trehalose), and aliquot the reconstituted protein solution to minimize free-thaw cycles.

## Contact

 | 400-999-6126

 | [cn.market@abclonal.com.cn](mailto:cn.market@abclonal.com.cn)
 | [www.abclonal.com.cn](http://www.abclonal.com.cn)

## Background

Leukocyte immunoglobulin-like receptors (LILRs) are inhibitory, stimulatory or soluble receptors encoded within the leukocyte receptor complex. Some LILRs are extensively polymorphic, and exhibit evidence for balancing selection and association with disease susceptibility. LILRA1 (LIR-6) can recognize MHC (major histocompatibility complex) class I or class I-like molecules, and high levels of sequence similarity among LILRA1, LILRA2 (ILT1), LILRA3 (ILT6) and LILRB1/B2.

## Basic Information

### Description

Recombinant Human LILRA1/LIR-6/CD85i Protein is produced by HEK293 cells expression system. The target protein is expressed with sequence (Pro17-Asn461) of human LILRA1/CD85i/LIR-6 (Accession #NP\_006854.1) fused with a 6xHis□Avi tag at the C-terminus.

### Bio-Activity

### Storage

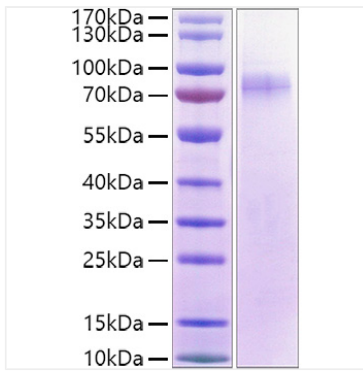
Store at -20°C. Store the lyophilized protein at -20°C to -80 °C up to 1 year from the date of receipt.

After reconstitution, the protein solution is stable at -20°C for 3 months, at 2-8°C for up to 1 week.

Avoid repeated freeze/thaw cycles.

## Validation Data

---



Recombinant Human LILRA1/LIR-6/CD85i Protein was determined by SDS-PAGE with Coomassie Blue, showing a band at 70-90kDa.