

Recombinant Human CSF1R/M-CSF R/CD115 Protein

Catalog No.: RP01484 **Recombinant**

Sequence Information

Species	Gene ID	Swiss Prot
Human	1436	P07333

Tags

C-hFc&His

Synonyms

CSF1R;C-FMS;CD115;CSF-1R;CSFR;FIM2;FMS;HDLS;M-CSF-R;BANDDOS

Product Information

Source	Purification
HEK293 cells	> 95% by SDS-PAGE.

Calculated MW	Observed MW
81.28 kDa	130-160 kDa

Endotoxin

<0.1EU/μg

Formulation

Lyophilized from a 0.22 μm filtered solution of PBS, pH 7.4.


Reconstitution

Centrifuge the vial before opening. Reconstitute to a concentration of 0.1-0.5 mg/mL in sterile distilled water. Avoid vortex or vigorously pipetting the protein. For long term storage, it is recommended to add a carrier protein or stabilizer (e.g. 0.1% BSA, 5% HSA, 10% FBS or 5% Trehalose), and aliquot the reconstituted protein solution to minimize free-thaw cycles.

Contact

 | 400-999-6126

 | cn.market@abclonal.com.cn

 | www.abclonal.com.cn

Background

The recombinant human CSF1R/GST chimera consists of 667 amino acids with a molecular weight of 76 kDa. It migrates as an about 75 kDa band in SDS-PAGE under reducing conditions. M-CSFR encoded by the proto-oncogene c-fms is the receptor for colony stimulating factor 1 (CSF1R), a cytokine involved in the proliferation, differentiation, and activation of macrophages. This cell surface glycoprotein is consisted by an extracellular ligand-binding domain, a single membrane-spanning segment, and an intracellular tyrosine kinase domain. CSF1R is a receptor for a cytokine called colony stimulating factor 1, The protein encoded by the CSFR1 gene is the receptor for colony stimulating factor 1, a cytokine which controls the production, differentiation, and function of macrophages. This receptor mediates most, if not all, of the biological effects of this cytokine. Ligand binding activates CSFR1 through a process of oligomerization and transphosphorylation. Mutations in CSF1R are associated with chronic myelomonocytic leukemia and type M4 acute myeloblastic leukemia. Increased levels of CSF1R1 are found in microglia in Alzheimer's disease and after brain injuries. The role of CSF1 and CSF1R in normal and neoplastic mammary development that may elucidate potential relationships of growth factor-induced biological changes in the breast during pregnancy and tumor progression.

Basic Information

Description

Recombinant Human CSF1R/M-CSF R/CD115 Protein is produced by HEK293 cells expression system. The target protein is expressed with sequence (Ile20-Glu512) of human M-CSF R/CSF1R/CD115 (Accession #NP_005202.2) fused with a Fc, 6×His tag at the C-terminus.

Bio-Activity

Measured by its binding ability in a functional ELISA. Immobilized Human CSF1 at 1μg/mL (100 μL/well) can bind Human CSF1R with a linear range of 0.01-7.8 ng/mL.

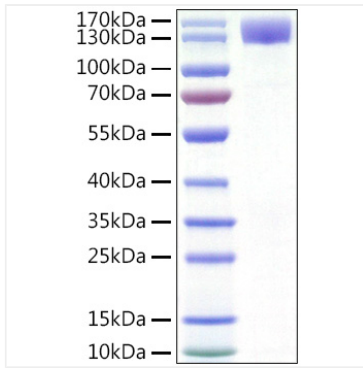
Storage

Store at -20°C. Store the lyophilized protein at -20°C to -80 °C up to 1 year from the date of receipt.

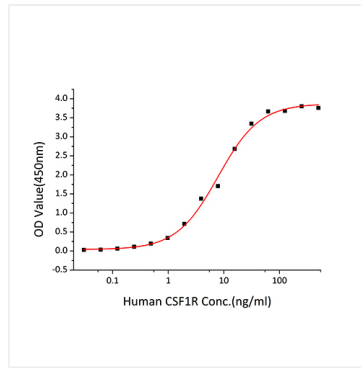
After reconstitution, the protein solution is stable at -20°C for 3 months, at 2-8°C for up to 1 week.

Avoid repeated freeze/thaw cycles.

Validation Data



Recombinant Human CSF1R/M-CSF R/CD115 Protein was determined by SDS-PAGE with Coomassie Blue, showing a band at 130-160kDa.



Immobilized Human CSF1 at 1 μ g/mL (100 μ L/well) can bind Human CSF1R with a linear range of 0.01-7.8 ng/mL.