

www.abclonal.com

## Recombinant

Species	Gene ID	Swiss Prot
Human	1363	P16870-1

### Synonyms

CPE:CPH

Carboxypeptidase E (CPE), also known as Carboxypeptidase H, is a peripheral membrane protein and a zinc metallo-carboxypeptidase, and the conversion of proCPE into CPE occurs primarily in secretory vesicles. The active form of CPE cleaves C-terminal amino acid residues of the peptide, and is thus involved in the biosynthesis of peptide hormones and neurotransmitters including insulin, enkephalin, etc. The enzymatic activity is enhanced by millimolar concentrations of Co<sup>2+</sup>. It has also been proposed that membrane-associated carboxypeptidase E acts as a sorting receptor for targeting regulated secretory proteins which are mostly prohormones and neuropeptides in the trans-Golgi network of the pituitary and in secretory granules into the secretory pathway. Its interaction with glycosphingolipid-cholesterol rafts at the TGN facilitates the targeting. Mutations in this gene are implicated in type II diabetes due to impaired glucose clearance and insulin resistance.

<b>Source</b> HEK293 cells	<b>Purification</b> ≥ 85 % as determined by SDS- PAGE
-------------------------------	--

**Endotoxin**  
< 0.1 EU/μg of the protein by LAL method.

Lyophilized from a 0.22  $\mu\text{m}$  filtered solution of PBS, pH 7.4.

Centrifuge the vial before opening. Reconstitute to a concentration of 0.1-0.5 mg/mL in sterile distilled water. Avoid vortex or vigorously pipetting the protein. For long term storage, it is recommended to add a carrier protein or stabilizer (e.g. 0.1% BSA, 5% HSA, 10% FBS or 5% Trehalose), and aliquot the reconstituted protein solution to minimize free-thaw cycles.

Recombinant Human Carboxypeptidase E/CPE Protein is produced by HEK293 cells expression system. The target protein is expressed with sequence (Met1-Ser453) of human Carboxypeptidase E/CPE (Accession #NP\_001864) fused with a Fc, 6×His tag at the C-terminus.

Store at -20°C. Store the lyophilized protein at -20°C to -80 °C up to 1 year from the date of receipt.  
After reconstitution, the protein solution is stable at -20°C for 3 months, at 2-8°C for up to 1 week.  
Avoid repeated freeze/thaw cycles.

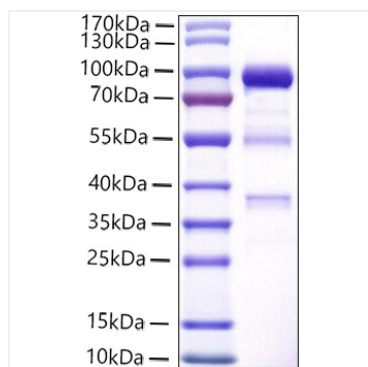
 | 400-999-6126

 | [cn.market@abclonal.com.cn](mailto:cn.market@abclonal.com.cn)

 | [www.abclonal.com.cn](http://www.abclonal.com.cn)

## Validation Data

---



Recombinant Human Carboxypeptidase  
E/CPE Protein was determined by SDS-PAGE  
under reducing conditions with Coomassie  
Blue.