

Recombinant Human GOLPH2/GOLM1 Protein

Catalog No.: RP01505 **Recombinant**

Sequence Information

Species	Gene ID	Swiss Prot
Human	51280	Q8NBJ4-1

Tags

C-His

Synonyms

C9orf155; GOLPH2; GP73; HEL46;
PSEC0257;
bA379P1.3;GOLM1;GOLPH2;GP73;HEL46;
PSEC0257;bA379P1.3

Product Information

Source	Purification
HEK293 cells	> 95% by SDS-PAGE.

Calculated MW	Observed MW
42.42 kDa	70-80 kDa

Endotoxin

<1EU/μg

Formulation

Lyophilized from a 0.22 μm filtered solution of PBS, pH 7.4.

Reconstitution

Centrifuge the vial before opening. Reconstitute to a concentration of 0.1-0.5 mg/mL in sterile distilled water. Avoid vortex or vigorously pipetting the protein. For long term storage, it is recommended to add a carrier protein or stabilizer (e.g. 0.1% BSA, 5% HSA, 10% FBS or 5% Trehalose), and aliquot the reconstituted protein solution to minimize free-thaw cycles.

Contact

 | 400-999-6126

 | cn.market@abclonal.com.cn

 | www.abclonal.com.cn

Background

Golgi membrane protein 1, also known as Golgi membrane protein GP73, Golgi phosphoprotein 2, and GOLM1, is a protein that belongs to the GOLM1 / CASC4 family. GOLM1 is widely expressed. It is highly expressed in the colon, prostate, trachea, and stomach. It is expressed at a lower level in testis, muscle, lymphoid tissues, white blood cells, and spleen. It is predominantly expressed by cells of the epithelial lineage. GOLM1 is expressed at a low level in the normal liver. Expression significantly increases in virus (HBV, HCV) infected liver. Expression of GOLM1 does not increase in liver disease due to non-viral causes (alcohol-induced liver disease, autoimmune hepatitis). Increased expression in hepatocytes appears to be a general feature of advanced liver disease. In liver tissue from patients with adult giant-cell hepatitis (GCH), GOLM1 is strongly expressed in hepatocyte-derived syncytial giant cells. GOLM1 is constitutively expressed by biliary epithelial cells but not by hepatocytes.

Basic Information

Description

Recombinant Human GOLPH2/GOLM1 Protein is produced by HEK293 cells expression system. The target protein is expressed with sequence (Ser36-Leu401) of human GOLPH2/GOLM1 (Accession #NP_057632.2) fused with a 6×His tag at the C-terminus.

Bio-Activity

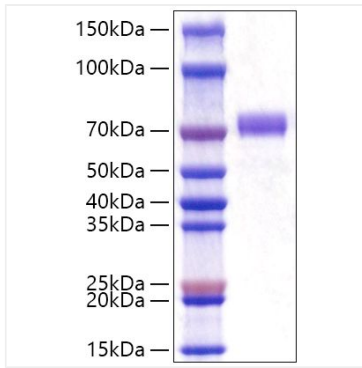
Storage

Store at -20°C. Store the lyophilized protein at -20°C to -80 °C up to 1 year from the date of receipt.

After reconstitution, the protein solution is stable at -20°C for 3 months, at 2-8°C for up to 1 week.

Avoid repeated freeze/thaw cycles.

Validation Data



Recombinant Human GOLPH2/GOLM1 Protein was determined by SDS-PAGE with Coomassie Blue, showing a band at 70-80 kDa.