

Recombinant Mouse YKL-40/CHI3L1 Protein

Catalog No.: RP01514 **Recombinant**

Sequence Information

| Species | Gene ID | Swiss Prot |
|---------|---------|------------|
| Mouse | 12654 | Q61362 |

Tags

C-His

Synonyms

CHI3L1;YKL-40;CGP-39;GP-39;ASRT7;CHI3L1

Product Information

| Source | Purification |
|--------------|--------------------|
| HEK293 cells | > 95% by SDS-PAGE. |

| Calculated MW | Observed MW |
|---------------|-------------|
| 40.92 kDa | 42-48 kDa |

Endotoxin

<0.1EU/μg

Formulation

Lyophilized from a 0.22 μm filtered solution of PBS, pH 7.4.

Reconstitution

Centrifuge the vial before opening. Reconstitute to a concentration of 0.1-0.5 mg/mL in sterile distilled water. Avoid vortex or vigorously pipetting the protein. For long term storage, it is recommended to add a carrier protein or stabilizer (e.g. 0.1% BSA, 5% HSA, 10% FBS or 5% Trehalose), and aliquot the reconstituted protein solution to minimize free-thaw cycles.

Contact

☎ | 400-999-6126

✉ | cn.market@abclonal.com.cn

🌐 | www.abclonal.com.cn

Background

Chitinase-3-like protein 1 (CHI3L1) is a secreted heparin-binding glycoprotein whose expression is associated with vascular smooth muscle cell migration. CHI3L1 is expressed at high levels in postconfluent nodular VSMC cultures and at low levels in subconfluent proliferating cultures. CHI3L1 is a tissue-restricted, chitin-binding lectin and member of glycosyl hydrolase family 18. In contrast to many other monocyto / macrophage markers, its expression is absent in monocytes and strong induced during late stages of human macrophage differentiation. Elevated levels of CHI3L1 are associated with disorders exhibiting increased connective tissue turnover, such as rheumatoid arthritis, osteoarthritis, scleroderma, and cirrhosis of liver, but is produced in cartilage from old donors or patients with osteoarthritis. CHI3L1 is abnormally expressed in the hippocampus of subjects with schizophrenia and may be involved in the cellular response to various environmental events that are reported to increase the risk of schizophrenia.

Basic Information

Description

Recombinant Mouse YKL-40/CHI3L1 Protein is produced by HEK293 cells expression system. The target protein is expressed with sequence (Tyr30-Ala389) of mouse YKL-40/CHI3L1 (Accession #NP_031721.2) fused with a 6×His tag at the C-terminus.

Bio-Activity

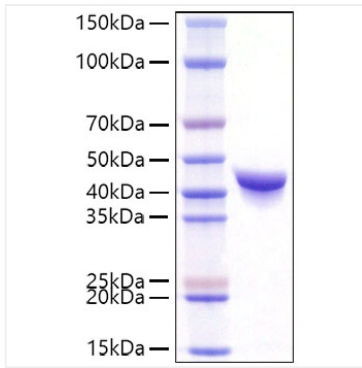
Storage

Store at -20°C. Store the lyophilized protein at -20°C to -80 °C up to 1 year from the date of receipt.

After reconstitution, the protein solution is stable at -20°C for 3 months, at 2-8°C for up to 1 week.

Avoid repeated freeze/thaw cycles.

Validation Data



Recombinant Mouse YKL-40/CHI3L1 Protein was determined by SDS-PAGE with Coomassie Blue, showing a band at 42-48kDa.