

Recombinant Mouse Prolactin/PRL Protein

Catalog No.: RP01518 **Recombinant**

Sequence Information

Species	Gene ID	Swiss Prot
Mouse	19109	Q9CPQ2

Tags

C-His

Synonyms

PRL;Prolactin;Gha1;Prl1a1;AV290867;PRL

Product Information

Source	Purification
HEK293 cells	> 95% by SDS-PAGE.

Calculated MW	Observed MW
23.25 kDa	25-30 kDa

Endotoxin

<0.1EU/μg


Formulation

Lyophilized from a 0.22 μm filtered solution of PBS, pH 7.4.

Reconstitution

Centrifuge the vial before opening. Reconstitute to a concentration of 0.1-0.5 mg/mL in sterile distilled water. Avoid vortex or vigorously pipetting the protein. For long term storage, it is recommended to add a carrier protein or stabilizer (e.g. 0.1% BSA, 5% HSA, 10% FBS or 5% Trehalose), and aliquot the reconstituted protein solution to minimize free-thaw cycles.

Contact

 | 400-999-6126 | cn.market@abclonal.com.cn | www.abclonal.com.cn

Background

Prolactin (PRL) is a hormone with multiple actions in the central nervous system (CNS) spanning from physiology to pathology. PRL exerts different actions through its receptors that can be found in both neurons and glial cells (astrocytes, microglia and oligodendrocytes) of the brain. It is generally believed that in vertebrates, prolactin (PRL) is predominantly synthesized and released by pituitary lactotrophs and plays important roles in many physiological processes via activation of PRL receptor (PRLR), including water and electrolyte balance, reproduction, growth and development, metabolism, immuno-modulation, and behavior.

Basic Information

Description

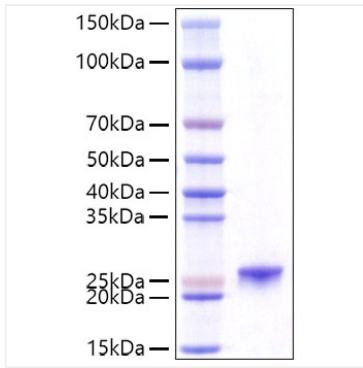
Recombinant Mouse Prolactin/PRL Protein is produced by HEK293 cells expression system. The target protein is expressed with sequence (Leu32-Cys228) of mouse Prolactin (Accession #NP_035294.2) fused with a 6×His tag at the C-terminus.

Bio-Activity

Storage

Store at -20°C. Store the lyophilized protein at -20°C to -80 °C up to 1 year from the date of receipt. After reconstitution, the protein solution is stable at -20°C for 3 months, at 2-8°C for up to 1 week. Avoid repeated freeze/thaw cycles.

Validation Data



Recombinant Mouse Prolactin/PRL Protein was determined by SDS-PAGE with Coomassie Blue, showing a band at 27kDa.