

# Recombinant Human MITF Protein

Catalog No.: RP01520 **Recombinant**

## Sequence Information

Species	Gene ID	Swiss Prot
Human	4286	O75030

### Tags

N-Rabbit Fc

### Synonyms

CMM8; COMMAD; MI; WS2; WS2A;  
bHLHe32;MITF;COMMAD;MI;WS2;WS2A;b  
HLHe32

## Product Information

Source	Purification
HEK293 cells	> 95% by SDS- PAGE.

### Endotoxin

<0.1EU/ $\mu$ g

### Formulation

Lyophilized from a 0.22  $\mu$ m filtered solution of PBS, pH 7.4.

### Reconstitution

Centrifuge the vial before opening. Reconstitute to a concentration of 0.1-0.5 mg/mL in sterile distilled water. Avoid vortex or vigorously pipetting the protein. For long term storage, it is recommended to add a carrier protein or stabilizer (e.g. 0.1% BSA, 5% HSA, 10% FBS or 5% Trehalose), and aliquot the reconstituted protein solution to minimize free-thaw cycles.

## Contact

 | 400-999-6126 | [cn.market@abclonal.com.cn](mailto:cn.market@abclonal.com.cn) | [www.abclonal.com.cn](http://www.abclonal.com.cn)

## Background

Microphthalmia-associated transcription factor (MITF) is a member of the basic helix-loop-helix leucine zipper (bHLH-Zip) family and functions as the master regulator of the melanocytic lineage. MITF (Microphthalmia-associated transcription factor) is a lineage-specific transcription factor that plays a critical role in melanocyte homeostasis and whose deregulation has been shown to contribute to melanoma disease. Microphthalmia-associated transcription factor (MITF) is expressed in melanomas and has a critical role in melanocyte development and transformation. Because inhibition of MITF inhibits cell growth in melanoma, MITF is a potential therapeutic target molecule. Microphthalmia-associated transcription factor (MITF) regulates the transcription of its target genes by binding to their promoters. Microphthalmia-associated transcription factor (MITF) is a key regulator of differentiation of melanocytes and retinal pigment epithelial cells, but it also has functions in non-pigment cells.

## Basic Information

### Description

Recombinant Human MITF Protein is produced by HEK293 cells expression system. The target protein is expressed with sequence (His402-Cys526) of human MITF (Accession #NP\_000239.1) fused with a raFc tag at the N-terminus.

### Bio-Activity

### Storage

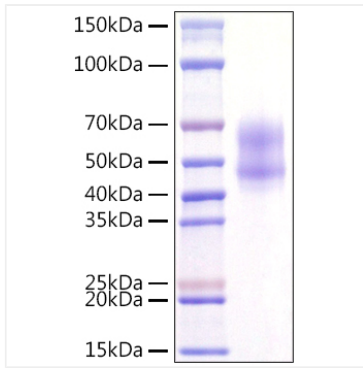
Store at -20°C. Store the lyophilized protein at -20°C to -80 °C up to 1 year from the date of receipt.

After reconstitution, the protein solution is stable at -20°C for 3 months, at 2-8°C for up to 1 week.

Avoid repeated freeze/thaw cycles.

## Validation Data

---



Recombinant Human MITF Protein was determined by SDS-PAGE with Coomassie Blue, showing a band at kDa.