

Catalog No.: RP01526 **Recombinant**

Species	Gene ID	Swiss Prot
Human	968	P34810

Tags
C-Rabbit Fc

CD68:GP110:LAMP4:SCARD1

Source HEK293 cells	Purification ≥ 95 % as determined by SDS- PAGE
-------------------------------	--

Calculated MW	Observed MW
57.18 kDa	90-120 kDa

< 0.1 EU/μg of the protein by LAL method.

Lyophilized from a 0.22 μm filtered solution of PBS, pH 7.4.

Centrifuge the vial before opening. Reconstitute to a concentration of 0.1-0.5 mg/mL in sterile distilled water. Avoid vortex or vigorously pipetting the protein. For long term storage, it is recommended to add a carrier protein or stabilizer (e.g. 0.1% BSA, 5% HSA, 10% FBS or 5% Trehalose), and aliquot the reconstituted protein solution to minimize free-thaw cycles.

 | 400-999-6126

 | cn.market@abclonal.com.cn

 | www.abclonal.com.cn

Macrosialin, also known as CD68 and Gp11, is a single-pass type I membrane protein which belongs to the LAMP family. CD68 is highly expressed by blood monocytes and tissue macrophages. It is also expressed in lymphocytes, fibroblasts and endothelial cells. CD68 is expressed in many tumor cell lines which could allow them to attach to selectins on vascular endothelium, facilitating their dissemination to secondary sites. CD68 plays a role in phagocytic activities of tissue macrophages, both in intracellular lysosomal metabolism and extracellular cell-cell and cell-pathogen interactions. It is a commonly used marker for macrophages. However, a number of studies have shown that CD68 antibodies react with other hematopoietic and non-hematopoietic cell types, suggesting that CD68 may not be a macrophage-specific antigen. CD68 binds to tissue- and organ-specific lectins or selectins, allowing homing of macrophage subsets to particular sites. Rapid recirculation of CD68 from endosomes and lysosomes to the plasma membrane may allow macrophages to crawl over selectin-bearing substrates or other cells.

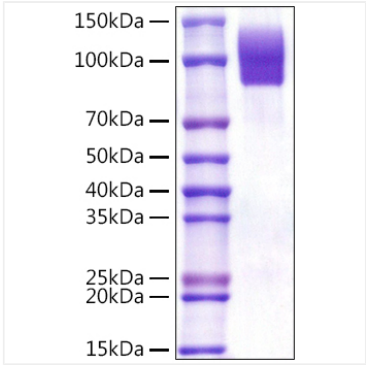
Recombinant Human SR-D1/CD68 Protein is produced by HEK293 cells expression system. The target protein is expressed with sequence (Asn22-Ser319) of human SR-D1/CD68 (Accession #NP_001242.2) fused with a raFc tag at the C-terminus.

Store at -20°C. Store the lyophilized protein at -20°C to -80 °C up to 1 year from the date of receipt.

After reconstitution, the protein solution is stable at -20°C for 3 months, at 2-8°C for up to 1 week.

Avoid repeated freeze/thaw cycles.

Validation Data



Recombinant Human SR-D1/CD68 Protein was determined by SDS-PAGE under reducing conditions with Coomassie Blue.