

Recombinant Human IL-1 Rrp2/IL-1 R6 Protein

Catalog No.: RP01547 **Recombinant**

Sequence Information

Species	Gene ID	Swiss Prot
Human	8808	Q9HB29

Tags

C-hFc

Synonyms

IL1RL2;IL-1Rrp2;IL-36R;IL1R-rp2;IL1RRP2;IL36R

Product Information

Source	Purification
HEK293 cells	> 95% by SDS-PAGE.

Calculated MW	Observed MW
61.90 kDa	75-100 kDa

Endotoxin

<0.1EU/μg

Formulation

Lyophilized from a 0.22 μm filtered solution of PBS, pH 7.4.

Reconstitution

Centrifuge the vial before opening. Reconstitute to a concentration of 0.1-0.5 mg/mL in sterile distilled water. Avoid vortex or vigorously pipetting the protein. For long term storage, it is recommended to add a carrier protein or stabilizer (e.g. 0.1% BSA, 5% HSA, 10% FBS or 5% Trehalose), and aliquot the reconstituted protein solution to minimize free-thaw cycles.

Contact

 | 400-999-6126

 | cn.market@abclonal.com.cn

 | www.abclonal.com.cn

Background

IL1RL2 (Interleukin 1 Receptor-Like 2, also known as IL-36R) is a Protein Coding gene. The protein encoded by this gene is a member of the interleukin 1 receptor family. This gene and four other interleukin 1 receptor family genes form a cytokine receptor gene cluster in a region mapped to chromosome 2q12. The IL36 receptor is an important mediator molecule in the inflammatory response. Animal data suggest that IL1RL2 is involved in mucosal healing. Therapeutic intervention of IL-36R signaling offers an innovative treatment paradigm for targeting epithelial cell-mediated inflammatory diseases such as the life-threatening psoriasis variant called generalized pustular psoriasis (GPP). Diseases associated with IL1RL2 include Familial Cold Autoinflammatory Syndrome 2 and Geographic Tongue.

Basic Information

Description

Recombinant Human IL-1 Rrp2/IL-1 R6 Protein is produced by HEK293 cells expression system. The target protein is expressed with sequence (Asp20-Arg335) of human IL-1 Rrp2/IL-1 R6 (Accession #NP_003845.2) fused with a hFc tag at the C-terminus.

Bio-Activity

Measured by its binding ability in a functional ELISA. Immobilized human IL-36 beta (Catalog: RP00020) at 10 μg/mL (100 μL/well) can bind human IL1RL2(Catalog: RP01547) with a linear range of 0.018-2.62 μg/mL.

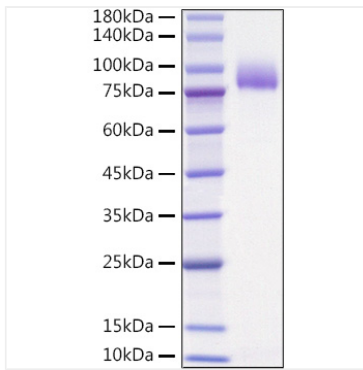
Storage

Store at -20°C. Store the lyophilized protein at -20°C to -80 °C up to 1 year from the date of receipt.

After reconstitution, the protein solution is stable at -20°C for 3 months, at 2-8°C for up to 1 week.

Avoid repeated freeze/thaw cycles.

Validation Data



Recombinant Human IL-1 Rrp2/IL-1 R6 Protein was determined by SDS-PAGE with Coomassie Blue, showing a band at 80-90kDa.