

# Recombinant Human NF-L/NEFL Protein

Catalog No.: RP01562 **Recombinant**

## Sequence Information

Species	Gene ID	Swiss Prot
Human	4747	P07196

### Tags

No tag

### Synonyms

NEFL;CMT1F;CMT2E;NF-L;NF68;NFL;PPP1R110

## Product Information

Source	Purification
<i>E. coli</i>	> 95% by SDS-PAGE.

Calculated MW	Observed MW
21.91 kDa	28 kDa

### Endotoxin

<0.1EU/μg

### Formulation

Lyophilized from a 0.22 μm filtered solution of PBS, pH 7.4.


### Reconstitution

Centrifuge the vial before opening. Reconstitute to a concentration of 0.1-0.5 mg/mL in sterile distilled water. Avoid vortex or vigorously pipetting the protein. For long term storage, it is recommended to add a carrier protein or stabilizer (e.g. 0.1% BSA, 5% HSA, 10% FBS or 5% Trehalose), and aliquot the reconstituted protein solution to minimize free-thaw cycles.

## Contact

 | 400-999-6126

 | [cn.market@abclonal.com.cn](mailto:cn.market@abclonal.com.cn)

 | [www.abclonal.com.cn](http://www.abclonal.com.cn)

## Background

Neurofilaments usually contain three intermediate filament proteins: NEFL, NEFM, and NEFH which are involved in the maintenance of neuronal caliber. May additionally cooperate with the neuronal intermediate filament proteins PRPH and INA to form neuronal filamentous networks (By similarity).

## Basic Information

### Description

Recombinant Human NF-L/NEFL Protein is produced by *E. coli* expression system. The target protein is expressed with sequence (Ser60-Thr250) of human NF-L/NEFL (Accession #NP\_006149.2) fused with no additional amino acid.

### Bio-Activity

#### Storage

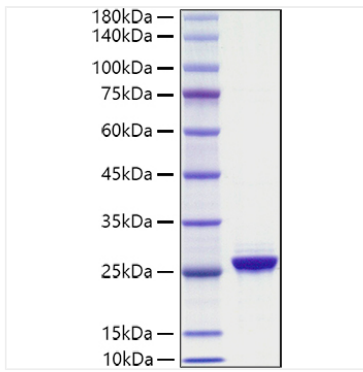
Store at -20°C. Store the lyophilized protein at -20°C to -80 °C up to 1 year from the date of receipt.

After reconstitution, the protein solution is stable at -20°C for 3 months, at 2-8°C for up to 1 week.

Avoid repeated freeze/thaw cycles.

## Validation Data

---



Recombinant Human NF-L/NEFL Protein was determined by SDS-PAGE with Coomassie Blue, showing a band at 28 kDa.