

Recombinant Mouse ALCAM/CD166 Protein

Catalog No.: RP01574 **Recombinant**

Sequence Information

Species	Gene ID	Swiss Prot
Mouse	11658	Q61490

Tags

C-His

Synonyms

CD166;MEMD;ALCAM

Product Information

Source	Purification
HEK293 cells	> 95% by SDS-PAGE.

Calculated MW	Observed MW
56.98 kDa	70-75 kDa

Endotoxin

<0.1EU/μg


Formulation

Lyophilized from a 0.22 μm filtered solution of PBS, pH 7.4.

Reconstitution

Centrifuge the vial before opening. Reconstitute to a concentration of 0.1-0.5 mg/mL in sterile distilled water. Avoid vortex or vigorously pipetting the protein. For long term storage, it is recommended to add a carrier protein or stabilizer (e.g. 0.1% BSA, 5% HSA, 10% FBS or 5% Trehalose), and aliquot the reconstituted protein solution to minimize free-thaw cycles.

Contact

 | 400-999-6126 | cn.market@abclonal.com.cn | www.abclonal.com.cn

Background

This protein is activated leukocyte cell adhesion molecule (ALCAM), also known as CD166 (cluster of differentiation 166), which is a member of a subfamily of immunoglobulin receptors with five immunoglobulin-like domains (VVC2C2C2) in the extracellular domain. This protein binds to T-cell differentiation antigene CD6, and is implicated in the processes of cell adhesion and migration. Multiple alternatively spliced transcript variants encoding different isoforms have been found.

Basic Information

Description

Recombinant Mouse ALCAM/CD166 Protein is produced by HEK293 cells expression system. The target protein is expressed with sequence (Trp28-Lys527) of mouse ALCAM/CD166 (Accession #NP_033785.1) fused with a 6×His tag at the C-terminus.

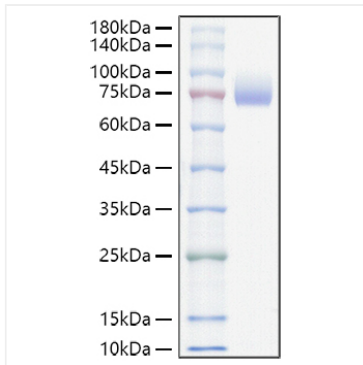
Bio-Activity

Measured by its binding ability in a functional ELISA. Immobilized Mouse CD166(Catalog: RP01574) at 10 μg/mL (100 μL/well) can bind Human CD6 (Catalog: RP01081) with a linear range of 0.17-80.5 ng/mL.

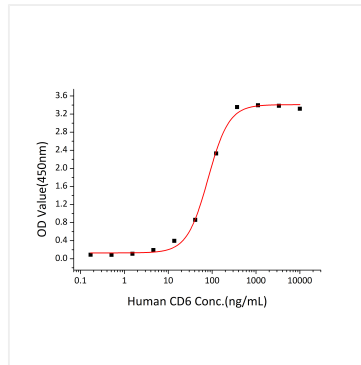
Storage

Store at -20°C. Store the lyophilized protein at -20°C to -80 °C up to 1 year from the date of receipt. After reconstitution, the protein solution is stable at -20°C for 3 months, at 2-8°C for up to 1 week. Avoid repeated freeze/thaw cycles.

Validation Data



Recombinant Mouse ALCAM/CD166 Protein was determined by SDS-PAGE with Coomassie Blue, showing a band at 70-75 kDa.



Immobilized Mouse CD166(Catalog: RP01574) at 10 μ g/mL (100 μ L/well) can bind Human CD6 (Catalog: RP01081) with a linear range of 0.17-80.5 ng/mL.