

# Recombinant Human Parathormone/PTH Protein

Catalog No.: RP01587 **Recombinant**

## Sequence Information

Species	Gene ID	Swiss Prot
Human	5741	P01270

### Tags

No tag

### Synonyms

PTH; PTH1; parathyroid hormone;PTH1

## Product Information

Source	Purification
<i>E. coli</i>	> 95% by SDS-PAGE.

Calculated MW	Observed MW
9.42 kDa	14-18 kDa

### Endotoxin

<0.1EU/μg

### Formulation

Lyophilized from a 0.22 μm filtered solution of PBS, pH 7.4.

### Reconstitution

Centrifuge the vial before opening. Reconstitute to a concentration of 0.1-0.5 mg/mL in sterile distilled water. Avoid vortex or vigorously pipetting the protein. For long term storage, it is recommended to add a carrier protein or stabilizer (e.g. 0.1% BSA, 5% HSA, 10% FBS or 5% Trehalose), and aliquot the reconstituted protein solution to minimize free-thaw cycles.

## Contact

☎ | 400-999-6126

✉ | [cn.market@abclonal.com.cn](mailto:cn.market@abclonal.com.cn)

🌐 | [www.abclonal.com.cn](http://www.abclonal.com.cn)

## Background

Parathyroid hormone is the most important endocrine regulator of calcium and phosphorus concentration in extracellular fluid. This hormone is secreted from cells of the parathyroid glands and finds its major target cells in bone and kidney. Another hormone, parathyroid hormone-related protein, binds to the same receptor as parathyroid hormone and has major effects on development. Like most other protein hormones, parathyroid hormone is synthesized as a prohormone. After intracellular processing, the mature hormone is packaged within the Golgi into secretory vesicles, then secreted into blood by exocytosis. Parathyroid hormone is secreted as a linear protein of 84 amino acids.

## Basic Information

### Description

Recombinant Human Parathormone/PTH Protein is produced by *E. coli* expression system. The target protein is expressed with sequence (Ser32-Gln115) of human Parathormone/PTH (Accession #NP\_000306.1) fused with no additional amino acid.

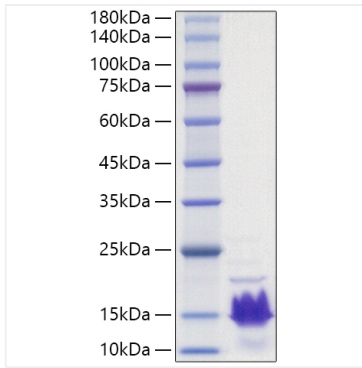
### Bio-Activity

### Storage

Store at -20°C. Store the lyophilized protein at -20°C to -80°C up to 1 year from the date of receipt. After reconstitution, the protein solution is stable at -20°C for 3 months, at 2-8°C for up to 1 week. Avoid repeated freeze/thaw cycles.

## Validation Data

---



Recombinant Human Parathormone/PTH Protein was determined by SDS-PAGE with Coomassie Blue, showing a band at 14-18 kDa.