

Recombinant Mouse SLAMF2/CD48 Protein

Catalog No.: RP01591 **Recombinant**

Sequence Information

Species	Gene ID	Swiss Prot
Mouse	12506	P18181

Tags

C-hFc

Synonyms

BCM1;BLAST;BLAST1;hCD48;mCD48;ME
M-102;SLAMF2;CD48

Product Information

Source	Purification
HEK293 cells	> 95% by SDS- PAGE.

Endotoxin

<0.1EU/ μ g

Formulation

Lyophilized from a 0.22 μ m filtered
solution of PBS, pH 7.4.

Reconstitution

Centrifuge the vial before opening.
Reconstitute to a concentration of
0.1-0.5 mg/mL in sterile distilled water.
Avoid vortex or vigorously pipetting the
protein. For long term storage, it is
recommended to add a carrier protein or
stabilizer (e.g. 0.1% BSA, 5% HSA, 10%
FBS or 5% Trehalose), and aliquot the
reconstituted protein solution to
minimize free-thaw cycles.

Contact

 | 400-999-6126 | cn.market@abclonal.com.cn | www.abclonal.com.cn

Background

This protein is a member of the CD2 subfamily of immunoglobulin-like receptors which includes SLAM (signaling lymphocyte activation molecules) proteins. The encoded protein is found on the surface of lymphocytes and other immune cells, dendritic cells and endothelial cells, and participates in activation and differentiation pathways in these cells. The encoded protein does not have a transmembrane domain, however, but is held at the cell surface by a GPI anchor via a C-terminal domain which maybe cleaved to yield a soluble form of the receptor. Multiple transcript variants encoding different isoforms have been found for this gene.

Basic Information

Description

Recombinant Mouse SLAMF2/CD48 Protein is produced by HEK293 cells expression system. The target protein is expressed with sequence (Phe23-Arg216) of mouse SLAMF2/CD48 (Accession #NP_031675.1) fused with a hFc tag at the C-terminus.

Bio-Activity

Measured by its binding ability in a functional ELISA. Immobilized Human CD48 (Catalog: RP01591) at 10 μ g/mL (100 μ L/well) can bind Human CD224 (Catalog: RP00167) with a linear range of 0.87-18.4 ng/mL.

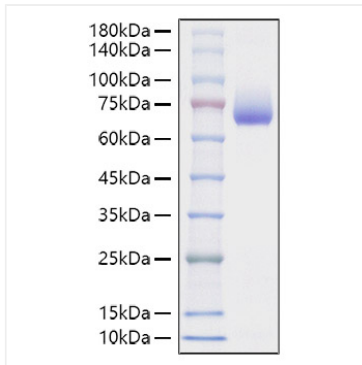
Storage

Store at -20°C. Store the lyophilized protein at -20°C to -80 °C up to 1 year from the date of receipt.

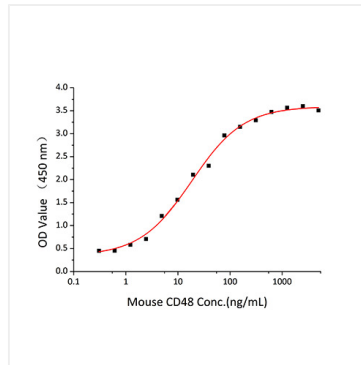
After reconstitution, the protein solution is stable at -20°C for 3 months, at 2-8°C for up to 1 week.

Avoid repeated freeze/thaw cycles.

Validation Data



Recombinant Mouse SLAMF2/CD48 Protein was determined by SDS-PAGE with Coomassie Blue, showing a band at 66-70kDa.



Immobilized Mouse CD48 (Catalog: RP01591) at 10 μ g/mL (100 μ L/well) can bind Human CD224 (Catalog: RP00167) with a linear range of 0.87-18.4 ng/mL.