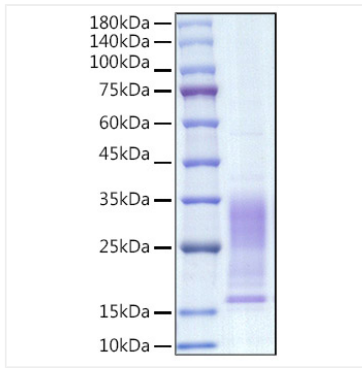
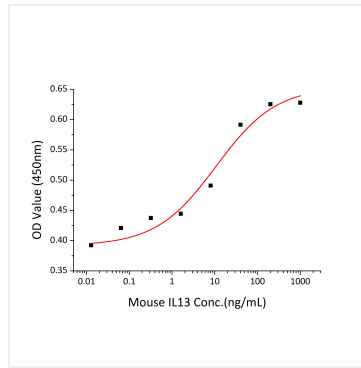


Validation Data



Recombinant Mouse IL-13 Protein was determined by SDS-PAGE under reducing conditions with Coomassie Blue.



Recombinant Mouse IL-13 stimulates cell proliferation of the TF-1 Mouse erythroleukemic cells. The ED₅₀ for this effect is 5.4-21.4 ng/mL, corresponding to a specific activity of $4.68 \times 10^4 \sim 1.85 \times 10^5$ units/mg.