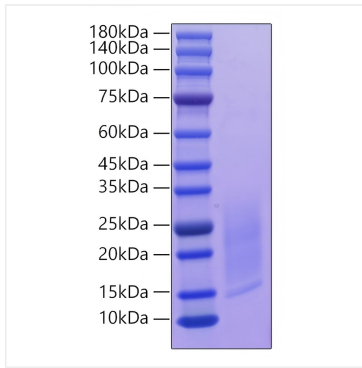


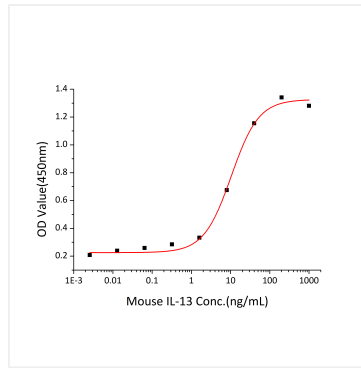


## Validation Data

---



Recombinant Mouse IL-13 Protein was determined by SDS-PAGE under reducing conditions with Coomassie Blue.



Measured in a cell proliferation assay using TF-1 Human erythroleukemic cells. The  $ED_{50}$  for this effect is 5.2-20.8 ng/mL, corresponding to a specific activity of  $4.81 \times 10^4 \sim 1.44 \times 10^5$  units/mg.