

Recombinant Mouse PPlase A/PPIA Protein

Catalog No.: RP01609LQ **Recombinant**

Sequence Information

Species	Gene ID	Swiss Prot
Mouse	268373	P17742

Tags

C-His

Synonyms

CYPA;CYPH;HEL-S-69p;PPIA

Product Information

Source	Purification
<i>E. coli</i>	> 95% by SDS-PAGE.

Endotoxin

< 1.0 EU/μg of the protein by LAL method.

Formulation

Supplied as a 0.22 μm filtered solution in PBS, 10% glycerol, pH 7.5.

Reconstitution

Background

This protein is a member of the peptidyl-prolyl cis-trans isomerase (PPlase) family. PPlases catalyze the cis-trans isomerization of proline imidic peptide bonds in oligopeptides and accelerate the folding of proteins. The protein is a cyclosporin binding-protein and may play a role in cyclosporin A-mediated immunosuppression. The protein can also interact with several HIV proteins, including p55 gag, Vpr, and capsid protein, and has been shown to be necessary for the formation of infectious HIV virions.

Basic Information

Description

Recombinant Mouse PPlase A/PPIA Protein is produced by *E. coli* expression system. The target protein is expressed with sequence (Met1-Leu164) of mouse PPlase A/PPIA (Accession #NP_032933.1) fused with a 6×His tag at the C-terminus.

Bio-Activity

Storage

Store at -70°C. This product is stable at ≤ -70°C for up to 1 year from the date of receipt. For optimal storage, aliquot into smaller quantities after centrifugation and store at recommended temperature. Avoid repeated freeze-thaw cycles. Avoid repeated freeze/thaw cycles.

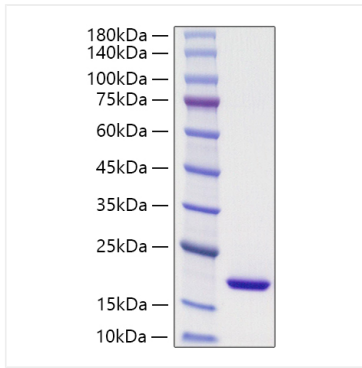
Contact

☎ | 400-999-6126

✉ | cn.market@abclonal.com.cn

🌐 | www.abclonal.com.cn

Validation Data



Recombinant Mouse PPlase A/PPIA Protein was determined by SDS-PAGE with Coomassie Blue, showing bands at 15-25 kDa.