

# Recombinant Human CCL5/RANTES Protein

Catalog No.: RP01612LQ **Recombinant**

## Sequence Information

Species	Gene ID	Swiss Prot
Human	6352	P13501

### Tags

No tag

### Synonyms

D17S136E; eoCP; RANTES; SCYA5; SIS-delta; SISd; TCP228; CCL5

## Product Information

Source	Purification
<i>Pichia</i>	> 95% by SDS-PAGE.

Calculated MW	Observed MW
7.85 kDa	15-20 kDa

### Endotoxin

&lt;0.1EU/μg

### Formulation

Supplied as a 0.22 μm filtered solution in PBS, pH 7.4.

### Reconstitution

## Background

Chemokines form a superfamily of secreted proteins involved in immunoregulatory and inflammatory processes. The superfamily is divided into four subfamilies based on the arrangement of the N-terminal cysteine residues of the mature peptide. This chemokine, a member of the CC subfamily, functions as a chemoattractant for blood monocytes, memory T helper cells and eosinophils. It causes the release of histamine from basophils and activates eosinophils. This cytokine is one of the major HIV-suppressive factors produced by CD8+ cells. It functions as one of the natural ligands for the chemokine receptor chemokine (C-C motif) receptor 5 (CCR5), and it suppresses in vitro replication of the R5 strains of HIV-1, which use CCR5 as a coreceptor. Alternative splicing results in multiple transcript variants that encode different isoforms.

## Basic Information

### Description

Recombinant Human CCL5/RANTES Protein is produced by *Pichia* expression system. The target protein is expressed with sequence (Ser24-Ser91) of human CCL5/RANTES (Accession #NP\_002976.2) fused with no additional amino acid.

### Bio-Activity

Measured by its binding ability in a functional ELISA. Immobilized Human CCL5 (Catalog: RP01612LQ) at 2 μg/mL (100 μL/well) can bind Mouse CXCL4 (Catalog: RP03170) with a linear range of 0.123-0.188 μg/mL.

### Storage

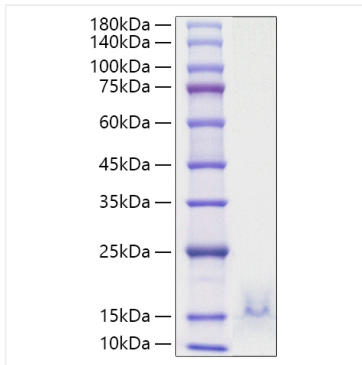
Store at -70°C. This product is stable at ≤ -70°C for up to 1 year from the date of receipt. For optimal storage, aliquot into smaller quantities after centrifugation and store at recommended temperature. Avoid repeated freeze-thaw cycles. Avoid repeated freeze/thaw cycles.

## Contact

 | 400-999-6126 | [cn.market@abclonal.com.cn](mailto:cn.market@abclonal.com.cn) | [www.abclonal.com.cn](http://www.abclonal.com.cn)

## Validation Data

---



Recombinant Human CCL5/RANTES Protein was determined by SDS-PAGE with Coomassie Blue, showing a band at 15-20 kDa.