

Recombinant Mouse CXCL1/GRO-alpha Protein

Catalog No.: RP01615 **Recombinant**

Sequence Information

Species	Gene ID	Swiss Prot
Mouse	14825	P12850

Tags

No tag

Synonyms

FSP; GRO1; GROa; MGSA; MGSA-a;
NAP-3; SCYB1;CXCL1

Product Information

Source	Purification
<i>Pichia</i>	> 95% by SDS-PAGE.

Calculated MW	Observed MW
9.31 kDa	10-15 kDa

Endotoxin

<0.1EU/μg

Formulation

Lyophilized from a 0.22 μm filtered solution of PBS, pH 7.4.

Reconstitution

Centrifuge the vial before opening. Reconstitute to a concentration of 0.1-0.5 mg/mL in sterile distilled water. Avoid vortex or vigorously pipetting the protein. For long term storage, it is recommended to add a carrier protein or stabilizer (e.g. 0.1% BSA, 5% HSA, 10% FBS or 5% Trehalose), and aliquot the reconstituted protein solution to minimize free-thaw cycles.

Contact

☎ | 400-999-6126

✉ | cn.market@abclonal.com.cn

🌐 | www.abclonal.com.cn

Background

This antimicrobial protein belongs a member of the CXC subfamily of chemokines. The encoded protein is a secreted growth factor that signals through the G-protein coupled receptor, CXC receptor 2. This protein plays a role in inflammation and as a chemoattractant for neutrophils. Aberrant expression of this protein is associated with the growth and progression of certain tumors. A naturally occurring processed form of this protein has increased chemotactic activity. Alternate splicing results in coding and non-coding variants of this gene. A pseudogene of this gene is found on chromosome 4.

Basic Information

Description

Recombinant Mouse CXCL1/GRO-alpha Protein is produced by *Pichia* expression system. The target protein is expressed with sequence (Arg20-Lys96) of mouse CXCL1/GRO-alpha (Accession #NP_032202.1) fused with no additional amino acid.

Bio-Activity

Measured by its binding ability in a functional ELISA. Immobilized Mouse CXCL1 at 2μg/mL (100 μL/well) can bind GRO alpha Rabbit pAb with a linear range of 0.6-2.37 ng/mL.

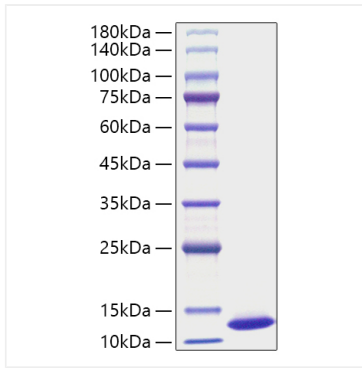
Storage

Store at -20°C. Store the lyophilized protein at -20°C to -80 °C up to 1 year from the date of receipt.

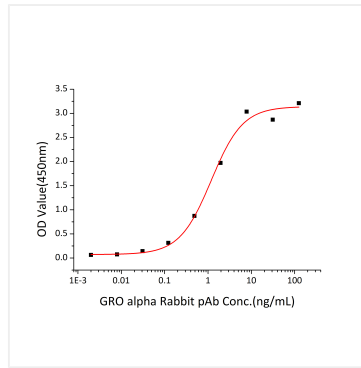
After reconstitution, the protein solution is stable at -20°C for 3 months, at 2-8°C for up to 1 week.

Avoid repeated freeze/thaw cycles.

Validation Data



Recombinant Mouse CXCL1/GRO-alpha Protein was determined by SDS-PAGE with Coomassie Blue, showing a band at 10-15 kDa.



Immobilized Mouse CXCL1 at 2 μ g/mL (100 μ L/well) can bind GRO alpha Rabbit pAb with a linear range of 0.6-2.37 ng/mL.