

Recombinant Human IL-22 Protein

Catalog No.: RP01616 **Recombinant**

Sequence Information

Species	Gene ID	Swiss Prot
Human	50616	Q9GZX6

Tags

C-His

Synonyms

Interleukin-22; IL-22; Cytokine Zcyto18;
IL-TIF; IL-D110; TIFa; TIFIL-23;
ZCYTO18;IL22

Product Information

Source	Purification
HEK293 cells	> 95% by SDS-PAGE.

Endotoxin

<0.1EU/μg

Formulation

Lyophilized from a 0.22 μm filtered solution of PBS, pH 7.4.

Reconstitution

Centrifuge the vial before opening. Reconstitute to a concentration of 0.1-0.5 mg/mL in sterile distilled water. Avoid vortex or vigorously pipetting the protein. For long term storage, it is recommended to add a carrier protein or stabilizer (e.g. 0.1% BSA, 5% HSA, 10% FBS or 5% Trehalose), and aliquot the reconstituted protein solution to minimize free-thaw cycles.

Contact

 | 400-999-6126

 | cn.market@abclonal.com.cn

 | www.abclonal.com.cn

Background

The cytokine interleukin-22 (IL-22) is a critical regulator of epithelial homeostasis. It has been implicated in multiple aspects of epithelial barrier function, including regulation of epithelial cell growth and permeability, production of mucus and antimicrobial proteins (AMPs), and complement production.

Basic Information

Description

Recombinant Human IL-22 Protein is produced by HEK293 cells expression system. The target protein is expressed with sequence (Ala34-Ile179) of human IL-22 (Accession #NP_065386.1) fused with and a 6×His tag at the C-terminus.

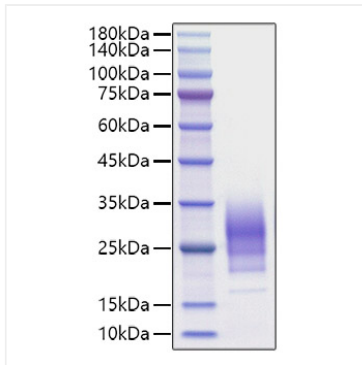
Bio-Activity

Measured by its ability to induce IL-10 secretion in COLO 205 human colorectal adenocarcinoma cells. The ED₅₀ for this effect is 160-640 pg/mL.

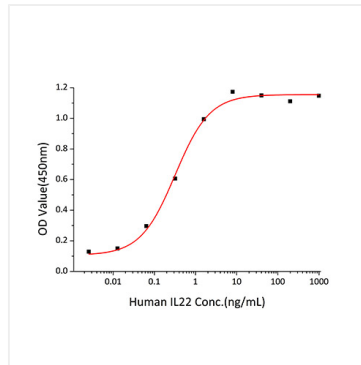
Storage

Store the lyophilized protein at -20°C to -80°C for 12 months. After reconstitution, the protein solution is stable at -20°C for 3 months, at 2-8°C for up to 1 week. Avoid repeated freeze/thaw cycles.

Validation Data



Recombinant Human IL-22 Protein was determined by SDS-PAGE with Coomassie Blue, showing a band at 17-35 kDa.



Recombinant Human IL-22 induce IL-10 secretion in COLO 205 human colorectal adenocarcinoma cells. The ED₅₀ for this effect is 160-640 pg/mL.