

Recombinant Human CCL3/MIP-1 alpha Protein

Catalog No.: RP01628 **Recombinant**

Sequence Information

Species	Gene ID	Swiss Prot
Human	6348	P10147

Tags

C-His

Synonyms

CCL3;G0S19-1;LD78ALPHA;MIP-1-alpha;MIP1A;SCYA3

Product Information

Source	Purification
HEK293 cells	> 95% by SDS-PAGE.

Endotoxin

<0.1EU/μg

Formulation

Lyophilized from a 0.22 μm filtered solution of PBS, pH 7.4.

Reconstitution

Centrifuge the vial before opening. Reconstitute to a concentration of 0.1-0.5 mg/mL in sterile distilled water. Avoid vortex or vigorously pipetting the protein. For long term storage, it is recommended to add a carrier protein or stabilizer (e.g. 0.1% BSA, 5% HSA, 10% FBS or 5% Trehalose), and aliquot the reconstituted protein solution to minimize free-thaw cycles.

Contact

 | 400-999-6126

 | cn.market@abclonal.com.cn

 | www.abclonal.com.cn

Background

This protein, also known as macrophage inflammatory protein 1 alpha, plays a role in inflammatory responses through binding to the receptors CCR1, CCR4 and CCR5. Polymorphisms at this locus may be associated with both resistance and susceptibility to infection by human immunodeficiency virus type 1.

Basic Information

Description

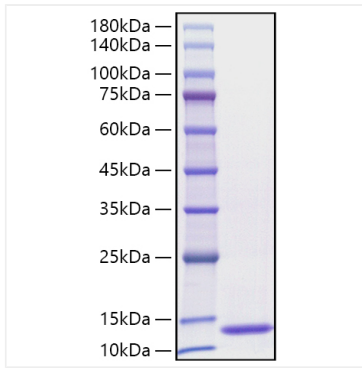
Recombinant Human CCL3/MIP-1 alpha Protein is produced by HEK293 cells expression system. The target protein is expressed with sequence (Ala23-Ala92) of human CCL3/MIP-1 alpha (Accession #NP_002974.1) fused with and a 6×His tag at the C-terminus.

Bio-Activity

Storage

Store the lyophilized protein at -20°C to -80°C for 12 months. After reconstitution, the protein solution is stable at -20°C for 3 months, at 2-8°C for up to 1 week. Avoid repeated freeze/thaw cycles.

Validation Data



Recombinant Human CCL3/MIP-1 alpha Protein was determined by SDS-PAGE with Coomassie Blue, showing a band at 10-15 kDa.