

Recombinant Human CXCL12/SDF-1 Protein

Catalog No.: RP01645

Recombinant

Sequence Information

Species	Gene ID	Swiss Prot
Human	6387	P48061

Tags

C-hFc

Synonyms

IRH; PBSF; SDF1; TLSF; TPAR1;
SCYB12; CXCL12

Product Information

Source	Purification
HEK293 cells	> 97% by SDS-PAGE.

Endotoxin

<0.1EU/μg

Formulation

Lyophilized from a 0.22 μm filtered solution of PBS, pH 7.4.

Reconstitution

Centrifuge the vial before opening. Reconstitute to a concentration of 0.1-0.5 mg/mL in sterile distilled water. Avoid vortex or vigorously pipetting the protein. For long term storage, it is recommended to add a carrier protein or stabilizer (e.g. 0.1% BSA, 5% HSA, 10% FBS or 5% Trehalose), and aliquot the reconstituted protein solution to minimize freeze-thaw cycles.

Background

In the mature CNS, CXCL12 modulates neurotransmission, neurotoxicity and neuroglial interactions. CXCL12 has crucial roles in the formation of multiple organ systems during embryogenesis and in the regulation of bone marrow haematopoiesis and immune function in the postnatal organism.

Basic Information

Description

Recombinant Human CXCL12/SDF-1 Protein is produced by HEK293 cells expression system. The target protein is expressed with sequence (Lys22-Met93) of human CXCL12/SDF-1 (Accession #NP_000600.1) fused with and a hFc tag at the C-terminus.

Bio-Activity

Storage

Store the lyophilized protein at -20°C to -80°C for 12 months. After reconstitution, the protein solution is stable at -20°C for 3 months, at 2-8°C for up to 1 week. Avoid repeated freeze/thaw cycles.

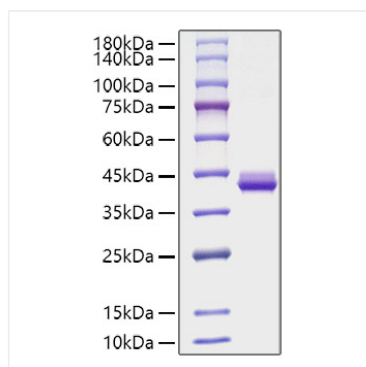
Contact

☎ | 400-999-6126

✉ | cn.market@abclonal.com.cn

🌐 | www.abclonal.com.cn

Validation Data



Recombinant Human CXCL12/SDF-1 Protein was determined by SDS-PAGE with Coomassie Blue, showing a band at 40 kDa.