

# Recombinant Human CCL2/MCP-1 Protein

Catalog No.: RP01657 **Recombinant**

## Sequence Information

Species	Gene ID	Swiss Prot
Human	6347	P13500

**Tags**  
NO-tag

**Synonyms**  
HC11; MCAF; MCP1; MCP-1; SCYA2;  
GDCE-2; SMC-CF; HSMCR30;CCL2

## Product Information

Source	Purification
<i>Pichia</i>	> 95% by SDS-PAGE.

**Endotoxin**  
<0.1EU/μg

**Formulation**  
Lyophilized from a 0.22 μm filtered solution of PBS, pH 7.4.

**Reconstitution**  
Centrifuge the vial before opening. Reconstitute to a concentration of 0.1-0.5 mg/mL in sterile distilled water. Avoid vortex or vigorously pipetting the protein. For long term storage, it is recommended to add a carrier protein or stabilizer (e.g. 0.1% BSA, 5% HSA, 10% FBS or 5% Trehalose), and aliquot the reconstituted protein solution to minimize free-thaw cycles.

## Contact

	400-999-6126
	cn.market@abclonal.com.cn
	www.abclonal.com.cn

## Background

Monokine with inflammatory and chemokinetic properties. Binds to CCR5. One of the major HIV-suppressive factors produced by CD8+ T-cells. Recombinant MIP-1-beta induces a dose-dependent inhibition of different strains of HIV-1, HIV-2, and simian immunodeficiency virus (SIV). The processed form MIP-1-beta(3-69) retains the abilities to induce down-modulation of surface expression of the chemokine receptor CCR5 and to inhibit the CCR5-mediated entry of HIV-1 in T-cells. MIP-1-beta(3-69) is also a ligand for CCR1 and CCR2 isoform B.

## Basic Information

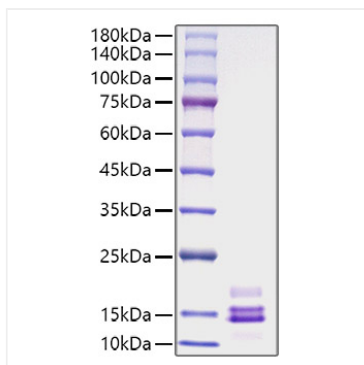
**Description**  
Recombinant Human CCL2/MCP-1 Protein is produced by *Pichia* expression system. The target protein is expressed with sequence (Gln24-Thr99) of human CCL2/MCP-1 (Accession #NP\_002973.1) fused with no additional amino acid.

### Bio-Activity

**Storage**  
Store at -20°C. Store the lyophilized protein at -20°C to -80 °C up to 1 year from the date of receipt. After reconstitution, the protein solution is stable at -20°C for 3 months, at 2-8°C for up to 1 week. Avoid repeated freeze/thaw cycles.

## Validation Data

---



Recombinant Human CCL2/MCP-1 Protein was determined by SDS-PAGE with Coomassie Blue, showing a band at 10-15 kDa.