

Recombinant Human CCL2/MCP-1 Protein

Catalog No.: RP01660 **Recombinant**

Sequence Information

Species	Gene ID	Swiss Prot
Human	6347	P13500

Tags

C-His

Synonyms

HC11; MCAF; MCP1; MCP-1; SCYA2; GDCF-2; SMC-CF; HSMCR30;CCL2

Product Information

Source	Purification
HEK293 cells	> 92% by SDS-PAGE.

Endotoxin

<0.1EU/μg

Formulation

Lyophilized from a 0.22 μm filtered solution of PBS, pH 7.4.

Reconstitution

Centrifuge the vial before opening. Reconstitute to a concentration of 0.1-0.5 mg/mL in sterile distilled water. Avoid vortex or vigorously pipetting the protein. For long term storage, it is recommended to add a carrier protein or stabilizer (e.g. 0.1% BSA, 5% HSA, 10% FBS or 5% Trehalose), and aliquot the reconstituted protein solution to minimize free-thaw cycles.

Contact

☎ | 400-999-6126

✉ | cn.market@abclonal.com.cn

🌐 | www.abclonal.com.cn

Background

Monokine with inflammatory and chemokinetic properties. Binds to CCR5. One of the major HIV-suppressive factors produced by CD8+ T-cells. Recombinant MIP-1-beta induces a dose-dependent inhibition of different strains of HIV-1, HIV-2, and simian immunodeficiency virus (SIV). The processed form MIP-1-beta(3-69) retains the abilities to induce down-modulation of surface expression of the chemokine receptor CCR5 and to inhibit the CCR5-mediated entry of HIV-1 in T-cells. MIP-1-beta(3-69) is also a ligand for CCR1 and CCR2 isoform B.

Basic Information

Description

Recombinant Human CCL2/MCP-1 Protein is produced by HEK293 cells expression system. The target protein is expressed with sequence (Gln24-Thr99) of human CCL2/MCP-1 (Accession #NP_002973.1) fused with and a 6xHis tag at the C-terminus.

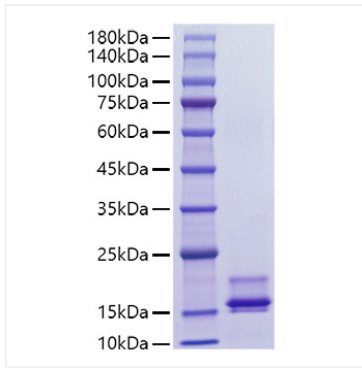
Bio-Activity

Measured by its ability to chemoattract THP-1 cells. The ED₅₀ for this effect is typically 3.33-13.32 ng/mL.

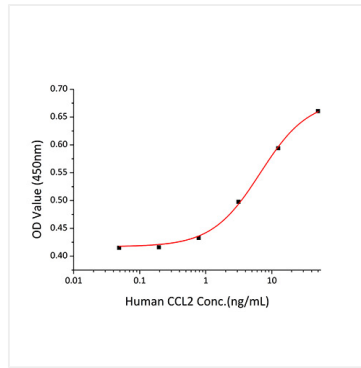
Storage

Store the lyophilized protein at -20°C to -80°C for 12 months. After reconstitution, the protein solution is stable at -20°C for 3 months, at 2-8°C for up to 1 week. Avoid repeated freeze/thaw cycles.

Validation Data



Recombinant Human CCL2/MCP-1 Protein was determined by SDS-PAGE with Coomassie Blue, showing a band at 10-20 kDa.



Recombinant Human CCL2 chemoattract THP-1 cells. The ED_{50} for this effect is typically 3.33-13.32 ng/mL.