

Catalog No.: RP01661 **Recombinant**

Species	Gene ID	Swiss Prot
Mouse	16160	P43432

C-6his

p40; Il-12b; Il12p40; Il-12p40;IL12B

Source	Purification
HEK293 cells	≥ 95 % as determined by SDS-PAGE

36.63 kDa 45-55 kDa

< 0.1 EU/μg of the protein by LAL method.

Lyophilized from a 0.22 μm filtered solution of PBS, pH 7.4.

Centrifuge the vial before opening. Reconstitute to a concentration of 0.1-0.5 mg/mL in sterile distilled water. Avoid vortex or vigorously pipetting the protein. For long term storage, it is recommended to add a carrier protein or stabilizer (e.g. 0.1% BSA, 5% HSA, 10% FBS or 5% Trehalose), and aliquot the reconstituted protein solution to minimize free-thaw cycles.

 | 400-999-6126

 | cn.market@abclonal.com.cn

 | www.abclonal.com.cn

Subunit beta of interleukin 12 (also known as natural killer cell stimulatory factor 2, or cytotoxic lymphocyte maturation factor 2, p40) (IL12B) is a subunit of human interleukin 12. IL12B/IL-12B is a cytokine that acts on T and natural killer cells and has a broad array of biological activities.

Recombinant Mouse IL-12B/IL-12 p40 Protein is produced by HEK293 cells expression system. The target protein is expressed with sequence (Met23-Ser335) of mouse IL-12B (Accession #NP_001152896.1) fused with and a 6×His tag at the C-terminus.

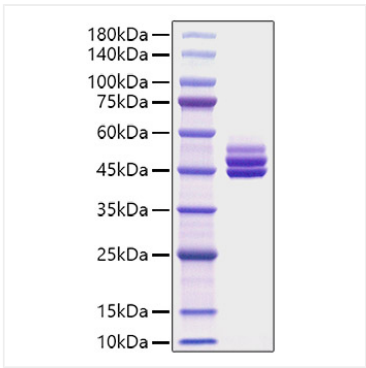
Measured by its binding ability in a functional ELISA. Immobilized Mouse IL12B (Catalog: RP01661) at 5 µg/mL (100 µL/well) can bind Human IL12RB1 with a linear range of 0.001-1.3 ng/mL.

Store at -20°C. Store the lyophilized protein at -20°C to -80 °C up to 1 year from the date of receipt.

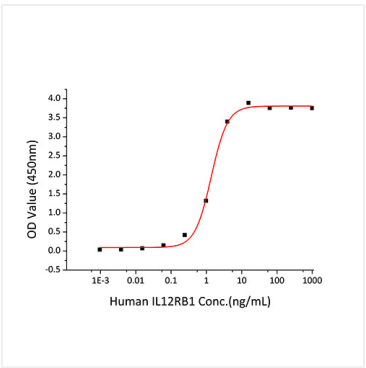
After reconstitution, the protein solution is stable at -20°C for 3 months, at 2-8°C for up to 1 week.

Avoid repeated freeze/thaw cycles.

Validation Data



Recombinant Mouse IL-12B/IL-12 p40 Protein was determined by SDS-PAGE under reducing conditions with Coomassie Blue.



Immobilized Mouse IL12B (Catalog: RP01661) at 5 µg/mL (100 µL/well) can bind Human IL12RB1 with a linear range of 0.001-1.3 ng/mL.