

**Catalog No.:** RP01676   **Recombinant**   **1 Publications**

Species	Gene ID	Swiss Prot
Mouse	16168	P48346

C-6His

**Synonyms**  
 IL15□Interleukin-15; IL-15

<b>Source</b> <i>E. coli</i>	<b>Purification</b> ≥ 95 % as determined by SDS- PAGE
---------------------------------	--

Calculated MW	Observed MW
14.09 kDa	14 kDa


< 1 EU/μg of the protein by LAL method.

Lyophilized from a 0.22  $\mu\text{m}$  filtered solution of PBS, pH 7.4.

Centrifuge the vial before opening. Reconstitute to a concentration of 0.1-0.5 mg/mL in sterile distilled water. Avoid vortex or vigorously pipetting the protein. For long term storage, it is recommended to add a carrier protein or stabilizer (e.g. 0.1% BSA, 5% HSA, 10% FBS or 5% Trehalose), and aliquot the reconstituted protein solution to minimize free-thaw cycles.

 | 400-999-6126

 | [cn.market@abclonal.com.cn](mailto:cn.market@abclonal.com.cn)

 | [www.abclonal.com.cn](http://www.abclonal.com.cn)

Interleukin 15 (IL-15) is a cytokine that regulates T and natural killer cell activation and proliferation. IL-15 induces the activation of JAK kinases, as well as the phosphorylation and activation of transcription activators STAT3, STAT5, and STAT6. In mouse, studies suggest that IL-15 may increase the expression of apoptosis inhibitor Bcl-xL, possibly through the transcription activation activity of STAT6, and thus prevent apoptosis. IL-15 plays an important role in the growth and differentiation of T and B lymphocytes, natural killer cells, macrophages, and monocytes as well as activation of a number of important intracellular signaling molecules.

Recombinant Mouse IL-15 Protein is produced by *E. coli* expression system. The target protein is expressed with sequence (Asn49-Ser162) of mouse IL-15 (Accession #NP\_001241676.1) fused with and a 6xHis tag at the C-terminus.

1.Measured in a cell proliferation assay using HT-2 mouse T cells. The ED<sub>50</sub> for this effect is 15-58 ng/mL, corresponding to a specific activity of 1.72×10<sup>4</sup>-6.67×10<sup>4</sup> units/mg.2.Measured in a cell proliferation assay using CTLL-2 mouse T cells. The ED50 for this effect is 8.1-32.4ng/mL,corresponding to a specific activity of 3.09×10<sup>4</sup>~1.23×10<sup>5</sup>units/mg.

The product is shipped at ambient temperature. Upon receipt, store it immediately at the temperature recommended below.

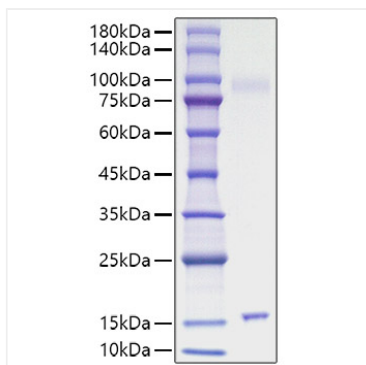
**Storage:** Store at -20°C. Store the lyophilized protein at -20°C to -80 °C up to 1 year from the date of receipt.

After reconstitution, the protein solution is stable at -20°C for 3 months, at 2-8°C for up to 1 week.

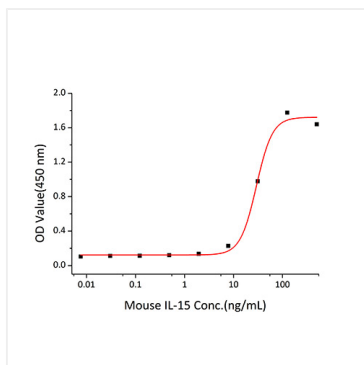
Avoid repeated freeze/thaw cycles.

For your safety and health, please wear a lab coat and disposable gloves for handling.

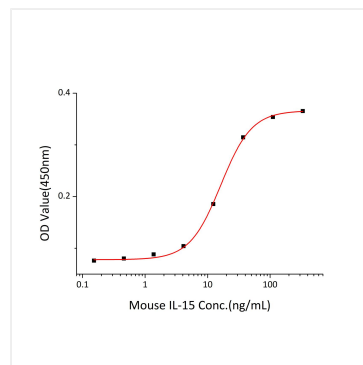
## Validation Data



Recombinant Mouse IL-15 Protein was determined by SDS-PAGE under reducing conditions with Coomassie Blue.



Recombinant Mouse IL-15 stimulates cell proliferation of the HT-2 mouse T cells. The  $ED_{50}$  for this effect is 15-58 ng/mL, corresponding to a specific activity of  $1.72 \times 10^4$ - $6.67 \times 10^4$  units/mg.



Measured in a cell proliferation assay using CTLL-2 mouse T cells. The  $ED_{50}$  for this effect is 8.1-32.4 ng/mL, corresponding to a specific activity of  $3.09 \times 10^4$ ~ $1.23 \times 10^5$  units/mg.