

Recombinant Human S100-A10 Protein

Catalog No.: RP01677LQ **Recombinant**

Sequence Information

Species	Gene ID	Swiss Prot
Human	6281	P60903

Tags

C-6His

Synonyms

42C; P11; p10; GP11; ANX2L; CAL1L;
CLP11; Ca[1]; ANX2LG[S100A10]

Product Information

Source	Purification
<i>E. coli</i>	≥ 90% as determined by SDS-PAGE.

Calculated MW	Observed MW
12.04 kDa	12-15 kDa

Endotoxin

< 0.1 EU/μg of the protein by LAL method.

Formulation

Supplied as a 0.22 μm filtered solution in 20mM Tris 10% Glycerol pH8.5

Reconstitution

Background

S100A10 functions as a linker tethering certain transmembrane proteins to annexin A2 thereby assisting their traffic to the plasma membrane and/or their firm anchorage at certain membrane sites.

Basic Information

Description

Recombinant Human S100-A10 Protein is produced by *E. coli* expression system. The target protein is expressed with sequence (Met1-Lys97) of human S100A10 (Accession #NP_002957.1) fused with and a 6×His tag at the C-terminus.

Bio-Activity

Storage

Store at -70°C. This product is stable at ≤ -70°C for up to 1 year from the date of receipt. For optimal storage, aliquot into smaller quantities after centrifugation and store at recommended temperature. Avoid repeated freeze-thaw cycles. Avoid repeated freeze/thaw cycles.

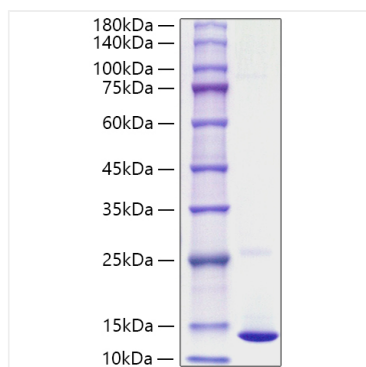
Contact

 | 400-999-6126

 | cn.market@abclonal.com.cn

 | www.abclonal.com.cn

Validation Data



Recombinant Human S100-A10 Protein was determined by SDS-PAGE under reducing conditions with Coomassie Blue.