

# Recombinant Mouse SIRPB1A Protein

Catalog No.: RP01683 **Recombinant**

## Sequence Information

Species	Gene ID	Swiss Prot
Mouse	320832	Q6F5F2

### Tags

C-6His

### Synonyms

Sirpb; Sirpb1; SIRP-beta; 9930027N05Rik

## Product Information

Source	Purification
HEK293 cells	> 92% by SDS-PAGE.

Calculated MW	Observed MW
38.39 kDa	55-65 kDa

### Endotoxin

<0.1EU/μg


### Formulation

Lyophilized from a 0.22 μm filtered solution of PBS, pH 7.4.

### Reconstitution

Centrifuge the vial before opening. Reconstitute to a concentration of 0.1-0.5 mg/mL in sterile distilled water. Avoid vortex or vigorously pipetting the protein. For long term storage, it is recommended to add a carrier protein or stabilizer (e.g. 0.1% BSA, 5% HSA, 10% FBS or 5% Trehalose), and aliquot the reconstituted protein solution to minimize free-thaw cycles.

## Contact

 | 400-999-6126

 | [cn.market@abclonal.com.cn](mailto:cn.market@abclonal.com.cn)

 | [www.abclonal.com.cn](http://www.abclonal.com.cn)

## Background

SIRPB1A (Signal-regulatory protein beta 1A), also known as SIRP beta 1, belongs to signal-regulatory-protein (SIRP) family, and immunoglobulin superfamily. Signal-regulatory proteins (SIRPs) are cell-surface glycoproteins expressed on myeloid and neural cells that have been shown to recruit SH2 domain-containing protein phosphatase 1 (SHP-1) and SHP-2 and to regulate receptor tyrosine kinase-coupled signaling.

## Basic Information

### Description

Recombinant Mouse SIRPB1A Protein is produced by HEK293 cells expression system. The target protein is expressed with sequence (Val28-Lys363) of mouse SIRPB1A (Accession #NP\_001002898.1) fused with and a 6×His tag at the C-terminus.

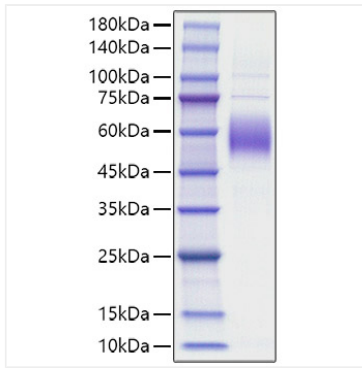
### Bio-Activity

#### Storage

Store at -20°C. Store the lyophilized protein at -20°C to -80 °C up to 1 year from the date of receipt. After reconstitution, the protein solution is stable at -20°C for 3 months, at 2-8°C for up to 1 week. Avoid repeated freeze/thaw cycles.

## Validation Data

---



Recombinant Mouse SIRPB1A Protein was determined by SDS-PAGE with Coomassie Blue, showing a band at 55-60 kDa.