

Catalog No.: RP01688 **Recombinant**

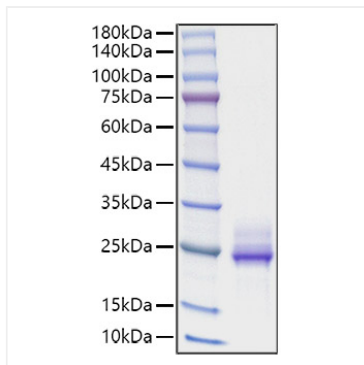
 | 400-999-6126

 | cn.market@abclonal.com.cn

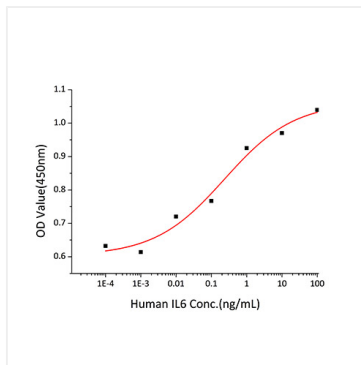
 | www.abclonal.com.cn

Avoid repeated freeze/thaw cycles.

Validation Data



Recombinant Human IL-6 Protein was determined by SDS-PAGE under reducing conditions with Coomassie Blue.



Recombinant Human IL6 stimulates cell proliferation of the TF-1 human erythroleukemic cells. The ED₅₀ for this effect is 0.12-0.47 ng/mL.