

Recombinant Mouse Latent TGF-beta 1(C33S) Protein

Catalog No.: RP01692 **Recombinant**

Sequence Information

Species	Gene ID	Swiss Prot
Mouse	21803	P04202

Tags
N-8*His

Synonyms

Tgfb; Tgfb-1; TGFbeta1; TGF-beta1[TGF-beta 1(C33S)]

Product Information

Source	Purification
HEK293 cells	> 95% by SDS-PAGE.

Endotoxin
<1EU/μg

Formulation

Lyophilized from a 0.22 μm filtered solution of PBS, pH 7.4.

Reconstitution

Centrifuge the vial before opening. Reconstitute to a concentration of 0.1-0.5 mg/mL in sterile distilled water. Avoid vortex or vigorously pipetting the protein. For long term storage, it is recommended to add a carrier protein or stabilizer (e.g. 0.1% BSA, 5% HSA, 10% FBS or 5% Trehalose), and aliquot the reconstituted protein solution to minimize freeze-thaw cycles.

Contact

 | 400-999-6126

 | cn.market@abclonal.com.cn

 | www.abclonal.com.cn

Background

Latent TGF beta 1 cDNA encodes a 390 amino acid precursor that contains a 29 aa signal peptide and a 361 aa proprotein. A furin-like convertase processes the proprotein to generate an N-terminal 249 aa latency-associated peptide (LAP) and a C-terminal 112 aa mature TGF-beta 1. Disulfide-linked homodimers of LAP and TGF-beta 1 remain non-covalently associated after secretion, forming the small latent TGF-beta 1 complex.

Basic Information

Description

Recombinant Mouse TGF-beta 1(C33S) Protein is produced by HEK293 cells expression system. The target protein is expressed with sequence (Leu30-Ser390(C33S)) of mouse TGF-beta 1 (Accession #NP_035707.1) fused with and a 8×His tag at the N-terminus.

Bio-Activity

Measured by its ability to inhibit the IL-4(Catalog: RP01161)-dependent proliferation of HT-2 mouse T cells. The ED₅₀ for this effect is 1.1-4.4 ng/mL, corresponding to a specific activity of 2.27×10⁵~9.09×10⁵ units/mg.

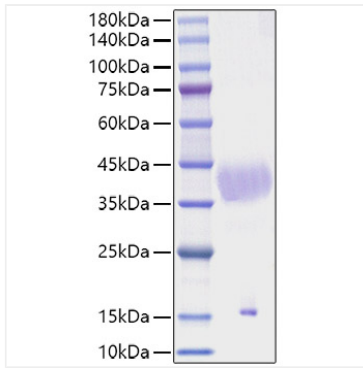
Storage

Store the lyophilized protein at -20°C to -80°C for 12 months.

After reconstitution, the protein solution is stable at -20°C for 3 months, at 2-8°C for up to 1 week.

Avoid repeated freeze/thaw cycles.

Validation Data



Recombinant Mouse TGF-beta 1 Protein was determined by SDS-PAGE with Coomassie Blue, showing a band at 40-45 kDa.