

Recombinant Human Alpha-synuclein/SNCA Protein

Catalog No.: RP01694 **Recombinant**

Sequence Information

Species	Gene ID	Swiss Prot
Human	6622	P37840-1

Tags
NO-tag

Synonyms
PD1; NACP; PARK1; PARK4; SNCA

Product Information

Source	Purification
<i>E. coli</i>	> 92% by SDS-PAGE.

Calculated MW	Observed MW
14.46 kDa	19 kDa

Endotoxin
<0.1EU/μg


Formulation
Lyophilized from a 0.22 μm filtered solution of PBS, pH 7.4.

Reconstitution
Centrifuge the vial before opening. Reconstitute to a concentration of 0.1-0.5 mg/mL in sterile distilled water. Avoid vortex or vigorously pipetting the protein. For long term storage, it is recommended to add a carrier protein or stabilizer (e.g. 0.1% BSA, 5% HSA, 10% FBS or 5% Trehalose), and aliquot the reconstituted protein solution to minimize free-thaw cycles.

Contact

 | 400-999-6126

 | cn.market@abclonal.com.cn

 | www.abclonal.com.cn

Background

Alpha-Synuclein (alpha-Syn), also known as NACP or SNCA, exists as at least two structural isoforms: one is helix-rich, membrane-bound form that both the N- and C-terminal regions of alpha-synuclein are tightly associated with membranes and the other is disordered, cytosolic form. Synuclein is found predominantly in the presynaptic termini, in both free or membrane-bound forms. SNCA is extensively localized in nucleus of neurons. It has been shown that alpha-Synuclein was highly expressed in the mitochondria in olfactory bulb, hippocampus, striatum, and thalamus, where the cytosolic alpha-Synuclein was also rich.

Basic Information

Description

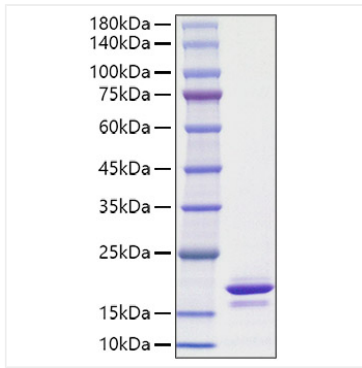
Recombinant Human Alpha-synuclein/SNCA Protein is produced by *E. coli* expression system. The target protein is expressed with sequence (Met1-Ala140) of human Alpha-synuclein/SNCA (Accession #NP_000336.1) fused with no additional amino acid.

Bio-Activity

Storage

Store at -20°C. Store the lyophilized protein at -20°C to -80 °C up to 1 year from the date of receipt. After reconstitution, the protein solution is stable at -20°C for 3 months, at 2-8°C for up to 1 week. Avoid repeated freeze/thaw cycles.

Validation Data



Recombinant Human Alpha-synuclein/SNCA Protein was determined by SDS-PAGE with Coomassie Blue, showing a band at 19 kDa.