

**Catalog No.: RP01723** **Recombinant**

Species	Gene ID	Swiss Prot
Human	5617	P01236

C-6His

## GHA1:PRL

<b>Source</b>	<b>Purification</b>
HEK293 cells	≥ 95 % as determined by SDS-PAGE

Calculated MW	Observed MW
23.74 kDa	25-35 kDa

< 1 EU/μg of the protein by LAL method.

Lyophilized from a 0.22  $\mu\text{m}$  filtered solution of PBS, pH 7.4.

Centrifuge the vial before opening. Reconstitute to a concentration of 0.1-0.5 mg/mL in sterile distilled water. Avoid vortex or vigorously pipetting the protein. For long term storage, it is recommended to add a carrier protein or stabilizer (e.g. 0.1% BSA, 5% HSA, 10% FBS or 5% Trehalose), and aliquot the reconstituted protein solution to minimize free-thaw cycles.

Prolactin (PRL) is a hormone with multiple actions in the central nervous system (CNS) spanning from physiology to pathology. PRL exerts different actions through its receptors that can be found in both neurons and glial cells (astrocytes, microglia and oligodendrocytes) of the brain. It is generally believed that in vertebrates, prolactin (PRL) is predominantly synthesized and released by pituitary lactotrophs and plays important roles in many physiological processes via activation of PRL receptor (PRLR), including water and electrolyte balance, reproduction, growth and development, metabolism, immuno-modulation, and behavior.


Recombinant Human Prolactin/PRL Protein is produced by HEK293 cells expression system. The target protein is expressed with sequence (Leu29-Cys227) of human Prolactin/PRL (Accession #NP\_000939.1) fused with and a 6×His tag at the C-terminus.

Store at -20°C. Store the lyophilized protein at -20°C to -80 °C up to 1 year from the date of receipt.  
After reconstitution, the protein solution is stable at -20°C for 3 months, at 2-8°C for up to 1 week.  
Avoid repeated freeze/thaw cycles.

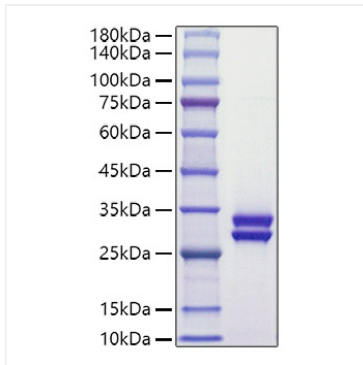
## Contact

 | 400-999-6126

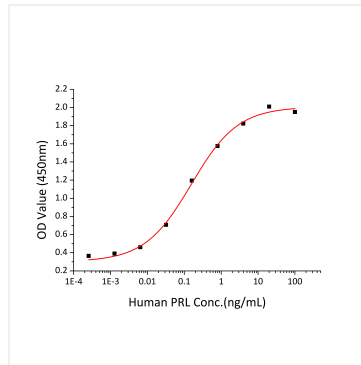
 | [cn.market@abclonal.com.cn](mailto:cn.market@abclonal.com.cn)

 | [www.abclonal.com.cn](http://www.abclonal.com.cn)

## Validation Data



Recombinant Human Prolactin/PRL Protein was determined by SDS-PAGE under reducing conditions with Coomassie Blue.



Recombinant Human Prolactin/PRL Protein promote the proliferation using Nb2-11 cells. The ED<sub>50</sub> for this effect is 0.08-0.30 ng/mL, corresponding to a specific activity of  $3.33 \times 10^6 \sim 1.25 \times 10^7$  units/mg.