

www.abclonal.com

Recombinant

Species	Gene ID	Swiss Prot
Mouse	12550	P09803

C-6His

Um; UVO; Ecad; ARC-1; E-cad; L-CAM:CDH1

Source	Purification
HEK293 cells	≥ 95 % as determined by SDS-PAGE

Calculated MW	Observed MW
61.70 kDa	75 kDa

< 0.1 EU/μg of the protein by LAL method.

Lyophilized from a 0.22 μm filtered solution of PBS, pH 7.4.

Centrifuge the vial before opening. Reconstitute to a concentration of 0.1-0.5 mg/mL in sterile distilled water. Avoid vortex or vigorously pipetting the protein. For long term storage, it is recommended to add a carrier protein or stabilizer (e.g. 0.1% BSA, 5% HSA, 10% FBS or 5% Trehalose), and aliquot the reconstituted protein solution to minimize free-thaw cycles.

 | 400-999-6126

 | cn.market@abclonal.com.cn

 | www.abclonal.com.cn

This protein is a member of the neurotrophic tyrosine kinase receptor (NTRK) family. This kinase is a membrane-bound receptor that, upon neurotrophin binding, phosphorylates itself and members of the MAPK pathway. The presence of this kinase leads to cell differentiation and may play a role in specifying sensory neuron subtypes. Mutations in this gene have been associated with congenital insensitivity to pain, anhidrosis, self-mutilating behavior, mental retardation and cancer. Alternate transcriptional splice variants of this gene have been found, but only three have been characterized to date.

Recombinant Mouse E-Cadherin/CDH1/CD324 Protein is produced by HEK293 cells expression system. The target protein is expressed with sequence (Asp157-Val709) of mouse E-Cadherin/Cadherin-1/CDH1 (Accession #NP_033994.1) fused with and a 6xHis tag at the C-terminus.

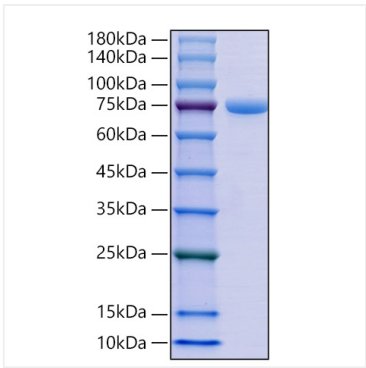
Measured by the ability of the immobilized protein to support the adhesion of the MCF-7 human breast cancer cells. The ED₅₀ for this effect is 0.82-3.29 µg/mL.

Store at -20°C. Store the lyophilized protein at -20°C to -80 °C up to 1 year from the date of receipt.

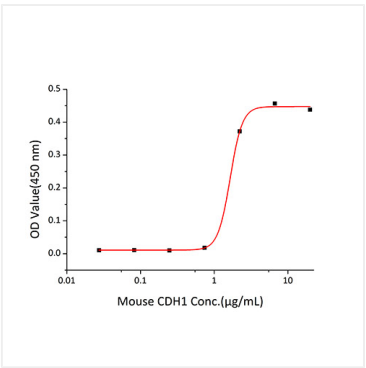
After reconstitution, the protein solution is stable at -20°C for 3 months, at 2-8°C for up to 1 week.

Avoid repeated freeze/thaw cycles.

Validation Data



Recombinant Mouse E-Cadherin/CDH1/CD324 Protein was determined by SDS-PAGE under reducing conditions with Coomassie Blue.



Recombinant Mouse CDH1 measured by the ability of the immobilized protein to support the adhesion of the MCF-7 human breast cancer cells. The ED₅₀ for this effect is 0.82-3.29 µg/mL.