

# Recombinant human SECTM1 Protein

Catalog No.: RP01731 **Recombinant**

## Sequence Information

Species	Gene ID	Swiss Prot
human	6398	Q8WVN6

### Tags

C-6His

### Synonyms

K12; SECTM;SECTM1

## Product Information

Source	Purification
HEK293 cells	> 95% by SDS-PAGE.

Calculated MW	Observed MW
13.56 kDa	20-25 kDa

### Endotoxin

< 0.01EU/μg


### Formulation

Lyophilized from a 0.22 μm filtered solution of PBS, pH 7.4.


### Reconstitution

Centrifuge the vial before opening. Reconstitute to a concentration of 0.1-0.5 mg/mL in sterile distilled water. Avoid vortex or vigorously pipetting the protein. For long term storage, it is recommended to add a carrier protein or stabilizer (e.g. 0.1% BSA, 5% HSA, 10% FBS or 5% Trehalose), and aliquot the reconstituted protein solution to minimize free-thaw cycles.

## Contact

 | 400-999-6126

 | [cn.market@abclonal.com.cn](mailto:cn.market@abclonal.com.cn)

 | [www.abclonal.com.cn](http://www.abclonal.com.cn)

## Background

Secreted and transmembrane 1 (SECTM1), also known as K12, is a transmembrane and secreted protein with characteristics of a type 1a transmembrane protein of SECTM family. It is found in a perinuclear Golgi-like pattern and thought to be involved in hematopoietic and/or immune system processes.

## Basic Information

### Description

Recombinant human SECTM1 Protein is produced by HEK293 cells expression system. The target protein is expressed with sequence (Gln29-Gly145) of human SECTM1 (Accession #NP\_002995.1.) fused with and a 6×His tag at the C-terminus.

### Bio-Activity

### Storage

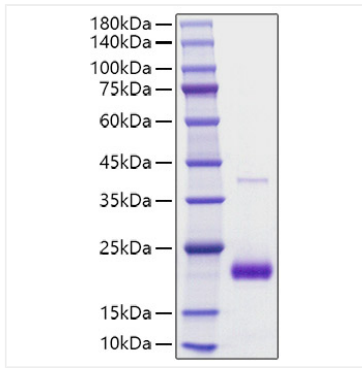
Store at -20°C. Store the lyophilized protein at -20°C to -80 °C up to 1 year from the date of receipt.

After reconstitution, the protein solution is stable at -20°C for 3 months, at 2-8°C for up to 1 week.

Avoid repeated freeze/thaw cycles.

## Validation Data

---



Recombinant human SECTM1 Protein was determined by SDS-PAGE with Coomassie Blue, showing a band at 18 kDa.