

Recombinant Human CCL5/RANTES Protein

Catalog No.: RP01750LQ **Recombinant**

Sequence Information

Species	Gene ID	Swiss Prot
Human	6352	P13501

Tags

C-6His

Synonyms

SISd; eoCP; SCYA5; RANTES; TCP228;
D17S136E; SIS-delta

Product Information

Source	Purification
<i>E. coli</i>	> 97% by SDS-PAGE.

Calculated MW	Observed MW
8.69 kDa	12-15 kDa

Endotoxin

< 1EU/ μ g

Formulation

Supplied as a 0.22 μ m filtered solution in PBS, pH 7.4.

Reconstitution

Background

Chemokines form a superfamily of secreted proteins involved in immunoregulatory and inflammatory processes. The superfamily is divided into four subfamilies based on the arrangement of the N-terminal cysteine residues of the mature peptide. This chemokine, a member of the CC subfamily, functions as a chemoattractant for blood monocytes, memory T helper cells and eosinophils. It causes the release of histamine from basophils and activates eosinophils. This cytokine is one of the major HIV-suppressive factors produced by CD8+ cells. It functions as one of the natural ligands for the chemokine receptor chemokine (C-C motif) receptor 5 (CCR5), and it suppresses in vitro replication of the R5 strains of HIV-1, which use CCR5 as a coreceptor. Alternative splicing results in multiple transcript variants that encode different isoforms.

Basic Information

Description

Recombinant Human CCL5/RANTES Protein is produced by *E. coli* expression system. The target protein is expressed with sequence (Ser24-Ser91) of human CCL5/RANTES (Accession #NP_002976.2) fused with and a 6 \times His tag at the C-terminus.

Bio-Activity

Measured by its binding ability in a functional ELISA. Immobilized Human CCL5 (Catalog: RP01750LQ) at 5 μ g/mL (100 μ L/well) can bind Mouse CXCL4 (Catalog: RP03170) with a linear range of 10-252.6 ng/mL.

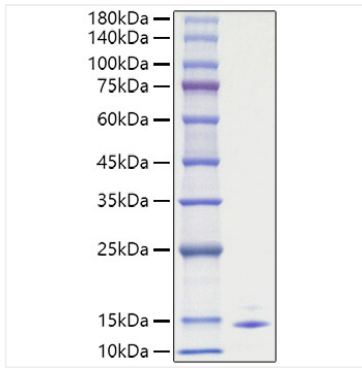
Storage

Store at -70°C. This product is stable at \leq -70°C for up to 1 year from the date of receipt. For optimal storage, aliquot into smaller quantities after centrifugation and store at recommended temperature. Avoid repeated freeze-thaw cycles. Avoid repeated freeze/thaw cycles.

Contact

 | 400-999-6126 | cn.market@abclonal.com.cn | www.abclonal.com.cn

Validation Data



Recombinant Human CCL5/RANTES Protein was determined by SDS-PAGE with Coomassie Blue, showing a band at 10-15 kDa.