

# Recombinant human IL-25/IL-17E Protein

**Catalog No.: RP01755** Recombinant

## Sequence Information

<b>Species</b>	<b>Gene ID</b>	<b>Swiss Prot</b>
human	64806	Q9H293

### Tags

C-6His

### Synonyms

IL17E;IL-25

## Product Information

<b>Source</b>	<b>Purification</b>
HEK293 cells	

<b>Calculated MW</b>	<b>Observed MW</b>
17.58 kDa	20-28 kDa

### Endotoxin

&lt; 0.1EU/μg

### Formulation


Lyophilized from a 0.22 μm filtered solution of 20 mM Tris, 150 mM NaCl, 1 mM EDTA, pH8.0

### Reconstitution

Centrifuge the vial before opening. Reconstitute to a concentration of 0.1-0.5 mg/mL in sterile distilled water. Avoid vortex or vigorously pipetting the protein. For long term storage, it is recommended to add a carrier protein or stabilizer (e.g. 0.1% BSA, 5% HSA, 10% FBS or 5% Trehalose), and aliquot the reconstituted protein solution to minimize free-thaw cycles.

## Contact

 | 400-999-6126

 | [cn.market@abclonal.com.cn](mailto:cn.market@abclonal.com.cn)
 | [www.abclonal.com.cn](http://www.abclonal.com.cn)

## Background

Interleukin-25 (IL-25) is a cytokine that shares sequence similarity with interleukin 17. This cytokine can induce NF-kappaB activation, and stimulate the production of interleukin 8. Both this cytokine and interleukin 17B are ligands for the cytokine receptor IL17BR. IL-25 is a member of the IL-17 family of cytokines. However, unlike the other members of this family, IL-25 promotes T helper (Th) 2 responses. IL-25 also regulates the development of autoimmune inflammation mediated by IL-17-producing T cells. IL-25 and IL-17, being members of the same cytokine family, play opposing roles in the pathogenesis of organ-specific autoimmunity. IL-25 promotes cell expansion and Th2 cytokine production when Th2 central memory cells are stimulated with thymic stromal lymphopietin (TSLP)-activated dendritic cells (DCs), homeostatic cytokines, or T cell receptor for antigen triggering. Elevated expression of IL-25 and IL-25R transcripts was observed in asthmatic lung tissues and atopic dermatitis skin lesions, linking their possible roles with exacerbated allergic disorders. A plausible explanation that IL-25 produced by innate effector eosinophils and basophils may augment the allergic inflammation by enhancing the maintenance and functions of adaptive Th2 memory cells had been provided.

## Basic Information

### Description

Recombinant human IL-25/IL-17E Protein is produced by HEK293 cells expression system. The target protein is expressed with sequence (Tyr33-Gly177) of human IL-25(Accession #NP\_073626.1) fused with a 6xHis tag at the C-terminus.

### Bio-Activity

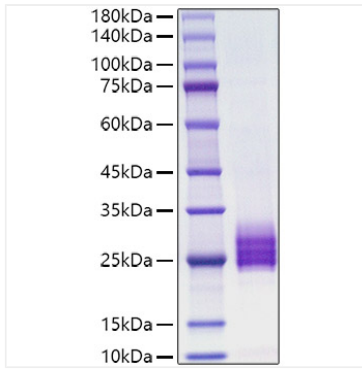
Measured by its ability to induce CXCL1/GRO alpha secretion in HT-29 human colon adenocarcinoma cells. The ED<sub>50</sub> for this effect is 13.32-53.24 ng/mL, corresponding to a specific activity of 1.88×10<sup>4</sup>~7.51×10<sup>4</sup> units/mg.

### Storage

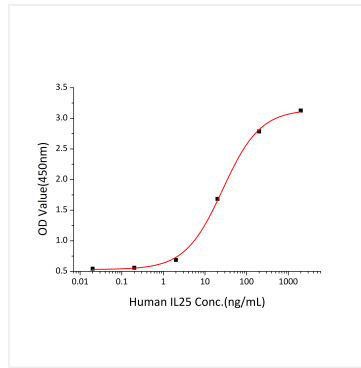
Store at -20°C. Store the lyophilized protein at -20°C to -80 °C up to 1 year from the date of receipt. After reconstitution, the protein solution is stable at -20°C for 3 months, at 2-8°C for up to 1 week. Avoid repeated freeze/thaw cycles.

## Validation Data

---



Recombinant human IL-25 Protein was determined by SDS-PAGE with Coomassie Blue, showing a band at 20-28 kDa.



Recombinant human IL-25 induce CXCL1/GRO alpha secretion in HT-29 human colon adenocarcinoma cells. The  $ED_{50}$  for this effect is 13.32-53.24 ng/mL, corresponding to a specific activity of  $1.88 \times 10^4 \sim 7.51 \times 10^4$  units/mg.