

Recombinant Mouse Interleukin-36 gamma/IL36G Protein

Catalog No.: RP01762 **Recombinant**

Sequence Information

Species	Gene ID	Swiss Prot
Mouse	215257	Q8R460

Tags

C-His

Synonyms

If36g; Il1f9; IL-36gamma

Product Information

Source	Purification
HEK293 cells	> 95% by SDS-PAGE.

Endotoxin

< 0.01EU/μg

Formulation

Lyophilized from a 0.22 μm filtered solution of PBS, pH 7.4.

Reconstitution

Reconstitute to a concentration of 0.1-0.5 mg/mL in sterile distilled water. For long term storage it is recommended to add a carrier protein (0.1% BSA, 5% HSA, 10% FBS or 5% Trehalose).

Background

The protein is a member of the interleukin 1 cytokine family. The activity of this cytokine is mediated by interleukin 1 receptor-like 2 (IL1RL2/IL1R-rp2), and is specifically inhibited by interleukin 1 family, member 5 (IL1F5/IL-1 delta). Interferon-gamma, tumor necrosis factor-alpha and interleukin 1, beta (IL1B) are reported to stimulate the expression of this cytokine in keratinocytes. The expression of this cytokine in keratinocytes can also be induced by a contact hypersensitivity reaction or herpes simplex virus infection.

Basic Information

Description

Recombinant Mouse Interleukin-36 gamma/IL36G Protein is produced by HEK293 cells expression system. The target protein is expressed with sequence (Gly13-Ser164) of mouse IL36G (Accession #) fused with and a 6×His tag at the C-terminus.

Bio-Activity

Measured by its ability to induce IL-6 secretion by NIH-3T3 mouse embryonic fibroblast cells. Towne, J.E. et al. (2004) J. Biol. Chem. 279:13677. The ED₅₀ for this effect is 0.1-0.4 μg/mL, corresponding to a specific activity of 2.5×10³~1×10⁴ units/mg.

Storage

Store at -20°C. Store the lyophilized protein at -20°C to -80 °C up to 1 year from the date of receipt.

After reconstitution, the protein solution is stable at -20°C for 3 months, at 2-8°C for up to 1 week.

Avoid repeated freeze/thaw cycles.

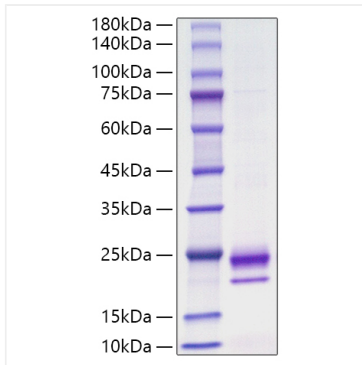
Contact

 | 400-999-6126

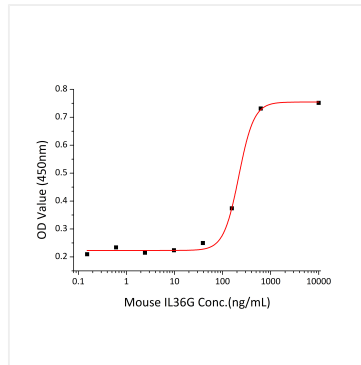
 | cn.market@abclonal.com.cn

 | www.abclonal.com.cn

Validation Data



Recombinant Mouse Interleukin-36 gamma/IL36G Protein was determined by SDS-PAGE with Coomassie Blue, showing a band at 20 kDa.



Recombinant Mouse IL36G induce IL-6 secretion by NIH-3T3 mouse embryonic fibroblast cells. Towne, J.E. et al. (2004) J. Biol. Chem. 279:13677. The ED₅₀ for this effect is 0.1-0.4 µg/mL, corresponding to a specific activity of $2.5 \times 10^3 \sim 1 \times 10^4$ units/mg.