

Recombinant Human CCL21/6Ckine Protein

Catalog No.: RP01781 **Recombinant**

Sequence Information

Species	Gene ID	Swiss Prot
Human	6366	O00585

Tags
NO-tag

Synonyms
CCL21;6Ckine;CKb9;SCYA21

Product Information

Source	Purification
<i>Pichia</i>	> 92% by SDS-PAGE.

Calculated MW	Observed MW
12.25 kDa	15-20 kDa

Endotoxin
Please contact us for more information.

Formulation
Lyophilized from a 0.22 µm filtered solution of PBS, pH 7.4.

Reconstitution
Reconstitute to a concentration of 0.1-0.5 mg/mL in sterile distilled water.

Background

Chemokines are a family of small chemotactic cytokines, or proteins secreted by cells. Chemokines share the same structure similarities such as small size, and the presence of four cysteine residues in conserved locations in order to form their 3-dimensional shape. Some of the chemokines are considered pro-inflammatory which can be induced to recruit cells of the immune system to a site of infection during an immune response, while others are considered homeostatic and are implied in controlling the migration of cells during normal processes of tissue maintenance and development. There are four members of the chemokine family: C-C kemokines, C kemokines, CXC kemokines and CX3C kemokines. The C-C kemokines have two cysteines nearby the amino terminus. There have been at least 27 distinct members of this subgroup reported for mammals, called C-C chemokine ligands-1 to 28. Chemokine ligand 21(CCL21), also known as 6Ckine, exodus-2, and secondary lymphoid-tissue chemokine(SLC), is a small cytokine belonging to the C-C chemokine family. CCL21 takes its name 6Ckine for its constitutively six conserved cysteine residues but not four cysteines typical to chemokines. CCL21 has function in inducing vigorous calcium migrations and chemotactic responses.

Basic Information

Description

Recombinant Human CCL21/6Ckine Protein is produced by *Pichia* expression system. The target protein is expressed with sequence (Ser24-Pro134) of human CCL21/6Ckine (Accession #NP_002980.1) fused with no additional amino acid.

Bio-Activity

Storage

Store at -20°C. Store the lyophilized protein at -20°C to -80 °C up to 1 year from the date of receipt.

After reconstitution, the protein solution is stable at -20°C for 3 months, at 2-8°C for up to 1 week.

Avoid repeated freeze/thaw cycles.

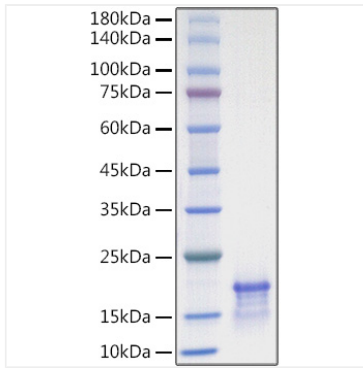
Contact

 | 400-999-6126

 | cn.market@abclonal.com.cn

 | www.abclonal.com.cn

Validation Data



Recombinant Human CCL21/6Ckine Protein was determined by SDS-PAGE with Coomassie Blue, showing a band at 16kDa.