

Recombinant Human GHRL/MTLRP Protein

Catalog No.: RP01796 **Recombinant**

Sequence Information

Species	Gene ID	Swiss Prot
Human	51738	Q9UBU3

Tags

C-Rabbit Fc

Synonyms

GHRL;MTLRP

Product Information

Source	Purification
HEK293 cells	> 97% by SDS-PAGE.

Endotoxin

< 0.01EU/μg

Formulation

Lyophilized from a 0.22 μm filtered solution of PBS, pH 7.4.

Reconstitution

Centrifuge the vial before opening. Reconstitute to a concentration of 0.1-0.5 mg/mL in sterile distilled water. Avoid vortex or vigorously pipetting the protein. For long term storage, it is recommended to add a carrier protein or stabilizer (e.g. 0.1% BSA, 5% HSA, 10% FBS or 5% Trehalose), and aliquot the reconstituted protein solution to minimize free-thaw cycles.

Contact

 | 400-999-6126

 | cn.market@abclonal.com.cn

 | www.abclonal.com.cn

Background

Ghrelin is the ligand for growth hormone secretagogue receptor type 1 (GHSR). Induces the release of growth hormone from the pituitary. Has an appetite-stimulating effect, induces adiposity and stimulates gastric acid secretion. Involved in growth regulation. Obestatin may be the ligand for GPR39. May have an appetite-reducing effect resulting in decreased food intake. May reduce gastric emptying activity and jejunal motility.

Basic Information

Description

Recombinant Human GHRL/MTLRP Protein is produced by HEK293 cells expression system. The target protein is expressed with sequence (Gly24-Lys117) of human GHRL/MTLRP (Accession #NP_001128413.1) fused with RaFc tag at the C-terminus.

Bio-Activity

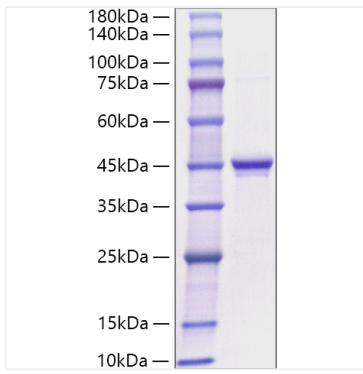
Storage

Store the lyophilized protein at -20°C to -80°C for 12 months.

After reconstitution, the protein solution is stable at -20°C for 3 months, at 2-8°C for up to 1 week.

Avoid repeated freeze/thaw cycles.

Validation Data



Recombinant Human GHRL/MTLRP Protein was determined by SDS-PAGE with Coomassie Blue, showing a band at 35-45 kDa.