

Recombinant Human KLHL20 Protein

Catalog No.: RP01816LQ **Recombinant**

Sequence Information

Species	Gene ID	Swiss Prot
Human	27252	Q9Y2M5

Tags

No-tag

Synonyms

KHLHX; KLEIP; KLHLX

Product Information

Source	Purification
<i>E. coli</i>	

Endotoxin

Please contact us for more information.

Formulation

Supplied as a 0.22 μ m filtered solution in PBS pH7.4.

Reconstitution

Background

Basic Information

Description

Recombinant human KLHL20 Protein is produced by *E. coli* expression system. The target protein is expressed with sequence (Met303-Glu605) of human KLHL20 (Accession #NP_055273.2) fused with no additional amino acid.

Bio-Activity


Storage

Store at -70°C. This product is stable at \leq -70°C for up to 1 year from the date of receipt. For optimal storage, aliquot into smaller quantities after centrifugation and store at recommended temperature. Avoid repeated freeze-thaw cycles. Avoid repeated freeze/thaw cycles.

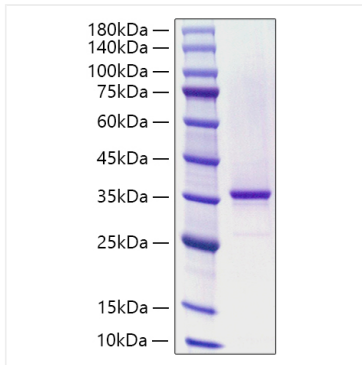
Contact

 | 400-999-6126

 | cn.market@abclonal.com.cn

 | www.abclonal.com.cn

Validation Data



Recombinant Human KLHL20 Protein was determined by SDS-PAGE with Coomassie Blue, showing a band at 35-45 kDa.