

Recombinant Human FSH Beta Protein

Catalog No.: RP01821 **Recombinant**

Sequence Information

Species	Gene ID	Swiss Prot
Human	2488	P01225

Tags

C-His

Synonyms

HH24;FSHB;FSH Beta;fshb

Product Information

Source	Purification
HEK293 cells	> 95% by SDS-PAGE.

Endotoxin

< 0.01EU/μg

Formulation

Lyophilized from a 0.22 μm filtered solution of PBS, pH 7.4.

Reconstitution

Centrifuge the vial before opening. Reconstitute to a concentration of 0.1-0.5 mg/mL in sterile distilled water. Avoid vortex or vigorously pipetting the protein. For long term storage, it is recommended to add a carrier protein or stabilizer (e.g. 0.1% BSA, 5% HSA, 10% FBS or 5% Trehalose), and aliquot the reconstituted protein solution to minimize free-thaw cycles.

Contact

 | 400-999-6126 | cn.market@abclonal.com.cn | www.abclonal.com.cn

Background

Follicle-stimulating hormone (FSH) is a gonadotrope-derived heterodimeric glycoprotein. FSH plays an essential role in processes involved in human reproduction, including spermatogenesis and the ovarian cycle. FSHB represents a conservative vertebrate gene with a unique function and it is located in a structurally stable gene-poor region. Polymorphisms in the follicle stimulating hormone beta subunit (FSHB) and follicle stimulating hormone receptor (FSHR) genes might disturb normal spermatogenesis and affect male reproductive ability. The FSHB -211G>T genotype is a key determinant in the regulation of gonadotropins in different reproductive-endocrine pathophysiology.

Basic Information

Description

Recombinant Human FSH Beta Protein is produced by HEK293 cells expression system. The target protein is expressed with sequence (Asn19-Glu129) of human FSH Beta (Accession #NP_000501.1) fused with a 6×His tag at the C-terminus.

Bio-Activity

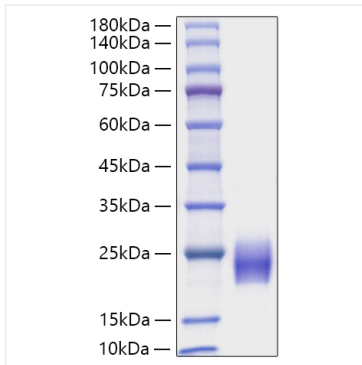
Storage

Store at -20°C. Store the lyophilized protein at -20°C to -80 °C up to 1 year from the date of receipt.

After reconstitution, the protein solution is stable at -20°C for 3 months, at 2-8°C for up to 1 week.

Avoid repeated freeze/thaw cycles.

Validation Data



Recombinant Human FSH Beta Protein was determined by SDS-PAGE with Coomassie Blue, showing a band at 15-35 kDa.