

Recombinant Human MUC-16/CA125 Protein

Catalog No.: RP01839 **Recombinant**

Sequence Information

Species	Gene ID	Swiss Prot
Human	94025	Q8WXI7

Tags

C-hFc

Synonyms

Mucin-16; MUC-16; Ovarian cancer-related tumor marker CA125; CA-125; Ovarian carcinoma antigen CA125[MUC16; CA125

Product Information

Source Purification

HEK293 cells

Endotoxin

<0.01EU/ μ g of the protein by LAL method.

Formulation

Lyophilized from a 0.22 μ m filtered solution of PBS, pH 7.4.

Reconstitution

Centrifuge the vial before opening. Reconstitute to a concentration of 0.1-0.5 mg/mL in sterile distilled water. Avoid vortex or vigorously pipetting the protein. For long term storage, it is recommended to add a carrier protein or stabilizer (e.g. 0.1% BSA, 5% HSA, 10% FBS or 5% Trehalose), and aliquot the reconstituted protein solution to minimize free-thaw cycles.

Contact

 | 400-999-6126 | cn.market@abclonal.com.cn | www.abclonal.com.cn

Background

The CA125, also known as the MUC16, is a mucin protein that may be found in type I transmembrane or secreted forms that are used monitor the progress of epithelial ovarian cancer therapy. The CA 125 molecule is almost certainly a glycoprotein with a predominance of O-linkages. It is heterogeneous with regard to both size and charge, most likely due to continuous deglycosylation of side chains during its life-span in bodily fluids. It exists as a very large complex (perhaps as much as 4 million daltons) under natural conditions.

Basic Information

Description

Recombinant Human MUC-16/CA125 Protein is produced by HEK293 cells expression system. The target protein is expressed with sequence (Gly12660-Met12923) of Human MUC-16/CA125 (Accession #NP_078966.2) fused with a hFc tag at the C-terminus.

Bio-Activity

Measured by its binding ability in a functional ELISA. Immobilized human Mesothelin/MSLN (Catalog: RP01053) at 2 μ g/mL (100 μ L/well) can bind human MUC16(Catalog: RP01839) with a linear range of 0.05-4.12 ng/mL.

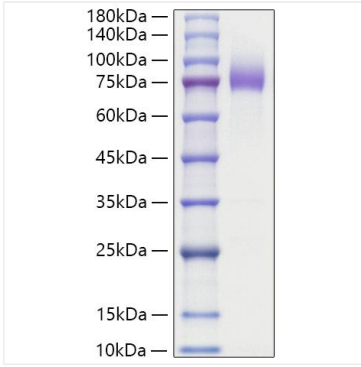
Storage

Store at -20°C. Store the lyophilized protein at -20°C to -80 °C up to 1 year from the date of receipt.

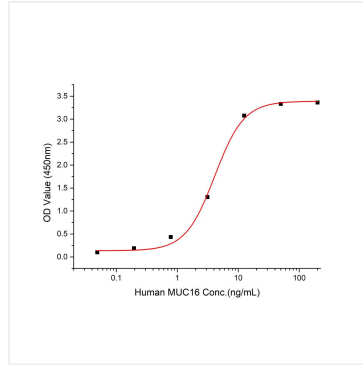
After reconstitution, the protein solution is stable at -20°C for 3 months, at 2-8°C for up to 1 week.

Avoid repeated freeze/thaw cycles.

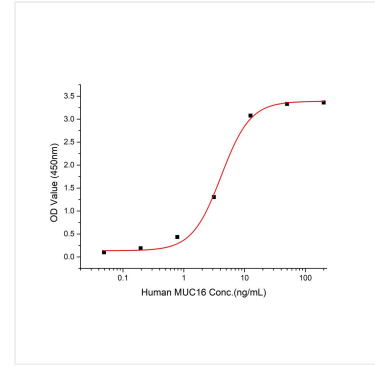
Validation Data



Recombinant Human MUC-16/CA125 Protein was determined by SDS-PAGE with Coomassie Blue, showing a band at 70-90 kDa.



Immobilized human Mesothelin/MSLN (Catalog: RP01053) at 2 µg/mL (100 µL/well) can bind human MUC16 (Catalog: RP01839) with a linear range of 0.05-4.12 ng/mL.



Immobilized human Mesothelin/MSLN (Catalog: RP01053) at 2 µg/mL (100 µL/well) can bind human MUC16 (Catalog: RP01839) with a linear range of 0.05-4.12 ng/mL.