

# Recombinant Human CCL3/MIP-1 alpha Protein

Catalog No.: RP01855 **Recombinant**

## Sequence Information

Species	Gene ID	Swiss Prot
Human	6348	P10147

### Tags

No-tag

### Synonyms

CCL3; G0S19-1; MIP1A; SCYA3; C-C motif chemokine 3; G0/G1 switch regulatory protein 19-1; Macrophage inflammatory protein 1-alpha; MIP-1-alpha; PAT 464.1; SIS-beta; Small-inducible cytokine A3; Tonsillar lymphocyte LD78 alpha protein; Cleaved into: MIP-1-alpha(4-69); LD78-alpha(4-69)

## Product Information

Source	Purification
<i>E. coli</i>	≥ 90% as determined by SDS-PAGE.

Calculated MW	Observed MW
7.78 kDa	10-15 kDa

### Endotoxin

< 1 EU/μg of the protein by LAL method.

### Formulation

Lyophilized from a 0.22 μm filtered solution of PBS, pH 7.4.

### Reconstitution

Centrifuge the vial before opening. Reconstitute to a concentration of 0.1-0.5 mg/mL in sterile distilled water. Avoid vortex or vigorously pipetting the protein. For long term storage, it is recommended to add a carrier protein or stabilizer (e.g. 0.1% BSA, 5% HSA, 10% FBS or 5% Trehalose), and aliquot the reconstituted protein solution to minimize free-thaw cycles.

## Contact

☎ | 400-999-6126

✉ | [cn.market@abclonal.com.cn](mailto:cn.market@abclonal.com.cn)

## Background

CCL3 also known as macrophage inflammatory protein 1-a, is a member of the CC subfamily. It's known that CCL3 is produced by monocytes/macrophages, lymphocytes, neutrophils as well as immune cells such as basophils, mast cells, fibroblasts, and dendritic cells. Meanwhile, CCL3 exerts various biological effects by binding to its three cell surface receptors, including CCR1, CCR3, and CCR5. MIP-1a induces a variety of pro-inflammatory activities such as leukocyte chemotaxis, and promotes the entry of T cells into the inflammatory tissue region from blood circulation. Chemotactic CD4+ cells, CD8+ cells, natural killer cells, and dendritic cells bind to the corresponding receptors and coordinate the occurrence of immune reactions in the immune response site by migrating through vascular endothelial cells. In addition, MIP-1a is considered as a key inflammatory mediator in granuloma, asthma, T1D as well as other autoimmune diseases.

## Basic Information

### Description

Recombinant Human CCL3/MIP-1 alpha Protein is produced by *E. coli* expression system. The target protein is expressed with sequence (Ala23-Ala92 ) of Human CCL3/MIP-1 alpha (Accession #NP\_002974.1) fused with no tag.

### Bio-Activity

### Shipping

The product is shipped at ambient temperature. Upon receipt, store it immediately at the temperature recommended below.

### Storage

Store at -20°C. Store the lyophilized protein at -20°C to -80 °C up to 1 year from the date of receipt.

After reconstitution, the protein solution is stable at -20°C for 3 months, at 2-8°C for up to 1 week.

Avoid repeated freeze/thaw cycles.

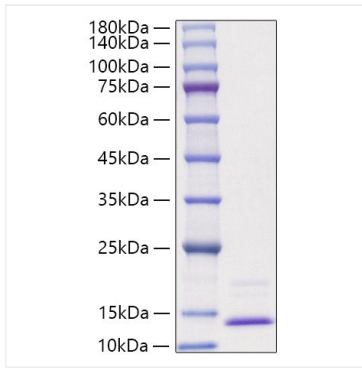
### Operational Notes

For your safety and health, please wear a lab coat and disposable gloves for handling.



## Validation Data

---



Recombinant Human CCL3/MIP-1 alpha Protein was determined by SDS-PAGE under reducing conditions with Coomassie Blue.