

Recombinant Human ACE/CD143 Protein

Catalog No.: RP01863 **Recombinant**

Sequence Information

| Species | Gene ID | Swiss Prot |
|---------|---------|------------|
| Human | 1636 | P12821 |

Tags

N-his

Synonyms

ACE; DCP; DCP1[\square]Angiotensin-converting enzyme; ACE; 3.4.15.1; Dipeptidyl carboxypeptidase I; Kininase II; CD143; Cleaved into: Angiotensin-converting enzyme; soluble form.

Product Information

| Source | Purification |
|--------------|--------------------|
| HEK293 cells | > 92% by SDS-PAGE. |

| Calculated MW | Observed MW |
|---------------|-------------|
| 142.60 kDa | 140-180 kDa |

Endotoxin

<0.1EU/ μ g of the protein by LAL method.

Formulation

Lyophilized from a 0.22 μ m filtered solution of PBS, pH 7.4.

Reconstitution

Centrifuge the vial before opening. Reconstitute to a concentration of 0.1-0.5 mg/mL in sterile distilled water. Avoid vortex or vigorously pipetting the protein. For long term storage, it is recommended to add a carrier protein or stabilizer (e.g. 0.1% BSA, 5% HSA, 10% FBS or 5% Trehalose), and aliquot the reconstituted protein solution to minimize free-thaw cycles.

Contact

 | 400-999-6126

 | cn.market@abclonal.com.cn

 | www.abclonal.com.cn

Background

Angiotensin I-converting enzyme (ACE, CD143) hydrolyzes small peptides such as angiotensin I, bradykinin, substance P, LH-RH and several others and thus plays a key role in blood pressure regulation and vascular remodeling. ACE plays a crucial role in blood pressure regulation, vascular remodeling, and immunity. ACE is a Zn²⁺ carboxydipeptidase which plays a key role in the regulation of blood pressure and also in the development of vascular pathologies and tissue remodeling. ACE is expressed as two isoforms: somatic ACE (sACE), which is responsible for its hypertensive properties, and a smaller isoform (testicular ACE), which is expressed solely in germinal cells.

Basic Information

Description

Recombinant Human ACE Protein is produced by HEK293 cells expression system. The target protein is expressed with sequence (Leu30-Leu1261) of Human ACE (Accession #NP_000780.1) fused with a His tag at the N-terminus.

Bio-Activity

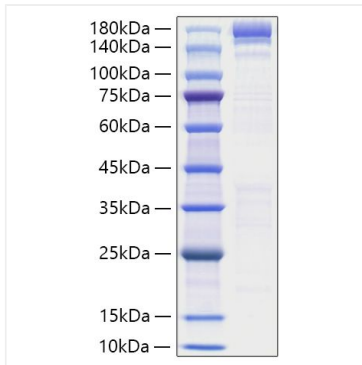
Storage

Store at -20°C. Store the lyophilized protein at -20°C to -80 °C up to 1 year from the date of receipt.

After reconstitution, the protein solution is stable at -20°C for 3 months, at 2-8°C for up to 1 week.

Avoid repeated freeze/thaw cycles.

Validation Data



Recombinant Human ACE/CD143 Protein was determined by SDS-PAGE with Coomassie Blue, showing a band at 140-180 kDa.