

# Recombinant Human IGF-II Protein

Catalog No.: RP01878 **Recombinant**

## Sequence Information

Species	Gene ID	Swiss Prot
Human	3481	P01344-1

### Tags

C-hFc

### Synonyms

IGF2;C11orf43;GRDF;IGF-II;PP9974

## Product Information

### Source Purification

HEK293 cells

### Endotoxin

<0.1EU/μg of the protein by LAL method.

### Formulation

Lyophilized from a 0.2 μm filtered solution of 50mMTris□100mM Glycine□pH7.5.

### Reconstitution

Centrifuge the tube before opening. Reconstitute to a concentration of 0.1-0.5 mg/mL in sterile distilled water. Avoid vortex or vigorously pipetting the protein. For long term storage, it is recommended to add a carrier protein or stabilizer (e.g. 0.1% BSA, 5% HSA, 10% FBS or 5% Trehalose), and aliquot the reconstituted protein solution to minimize free-thaw cycles.

## Contact

☎ | 400-999-6126

✉ | [cn.market@abclonal.com.cn](mailto:cn.market@abclonal.com.cn)

🌐 | [www.abclonal.com.cn](http://www.abclonal.com.cn)

## Background

This protein belongs a member of the insulin family of polypeptide growth factors, which are involved in development and growth. It is an imprinted gene, expressed only from the paternal allele, and epigenetic changes at this locus are associated with Wilms tumour, Beckwith-Wiedemann syndrome, rhabdomyosarcoma, and Silver-Russell syndrome. A read-through INS-IGF2 gene exists, whose 5' region overlaps the INS gene and the 3' region overlaps this gene. Alternatively spliced transcript variants encoding different isoforms have been found for this gene.

## Basic Information

### Description

Recombinant Human IGF-II Protein is produced by HEK293 cells expression system. The target protein is expressed with sequence (Ala25-Glu91) of human IGF2 (Accession #P01344).

### Bio-Activity

### Storage

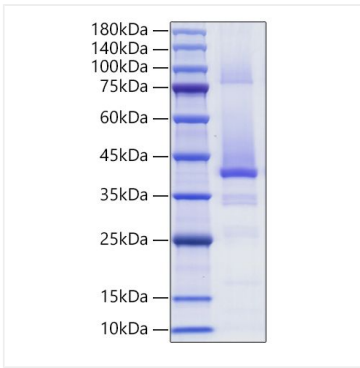
Store at -20°C. Store the lyophilized protein at -20°C to -80 °C up to 1 year from the date of receipt.

After reconstitution, the protein solution is stable at -20°C for 3 months, at 2-8°C for up to 1 week.

Avoid repeated freeze/thaw cycles.

## Validation Data

---



Recombinant Human IGF-II Protein was determined by SDS-PAGE with Coomassie Blue, showing a band at 35-45 kDa.