

Recombinant Human TNFSF4/OX40 ligand/CD252 Protein

Catalog No.: RP01902 **Recombinant**

Sequence Information

Species	Gene ID	Swiss Prot
Human	7292	P23510

Tags

N-hFc

Synonyms

CD134L;CD252;GP34;OX-40L;OX40L;TNL G2B;TXGP1;TNFSF4

Product Information

Source	Purification
HEK293 cells	> 95% by SDS-PAGE.

Endotoxin

< 0.01 EU/μg of the protein by LAL method.

Formulation

Lyophilized from a 0.22 μm filtered solution of PBS, pH 7.4.

Reconstitution

Centrifuge the vial before opening. Reconstitute to a concentration of 0.1-0.5 mg/mL in sterile distilled water. Avoid vortex or vigorously pipetting the protein. For long term storage, it is recommended to add a carrier protein or stabilizer (e.g. 0.1% BSA, 5% HSA, 10% FBS or 5% Trehalose), and aliquot the reconstituted protein solution to minimize freeze-thaw cycles.

Contact

 | 400-999-6126

 | cn.market@abclonal.com.cn

 | www.abclonal.com.cn

Background

This protein belongs to a cytokine of the tumor necrosis factor (TNF) ligand family. The encoded protein functions in T cell antigen-presenting cell (APC) interactions and mediates adhesion of activated T cells to endothelial cells. Polymorphisms in this gene have been associated with Sjogren's syndrome and systemic lupus erythematosus. Alternative splicing results in multiple transcript variants.

Basic Information

Description

Recombinant Human TNFSF4/OX40 ligand/CD252 Protein is produced by HEK293 cells expression system. The target protein is expressed with sequence (Gln51-Leu183) of Human TNFSF4/OX40 ligand/CD252 (Accession #NP_003317.1) fused with a hFc tag at the N-terminus.

Bio-Activity

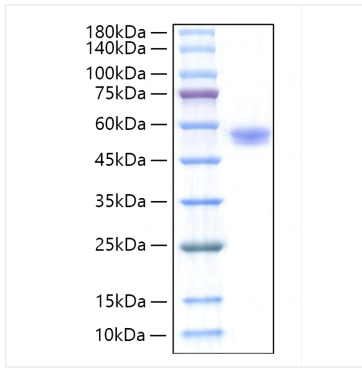
Storage

Store at -20°C. Store the lyophilized protein at -20°C to -80 °C up to 1 year from the date of receipt.

After reconstitution, the protein solution is stable at -20°C for 3 months, at 2-8°C for up to 1 week.

Avoid repeated freeze/thaw cycles.

Validation Data



Recombinant Human TNFSF4/OX40 ligand/CD252 Protein was determined by SDS-PAGE with Coomassie Blue, showing a band at 45-60kDa.