

Recombinant Mouse CCL22/MDC Protein

Catalog No.: RP01906 **Recombinant**

Sequence Information

Species	Gene ID	Swiss Prot
Mouse	20299	O88430

Tags

C-His

Synonyms

Ccl22; Abcd1; Scya22; C-C motif chemokine 22; Activated B and dendritic cell-derived; CC chemokine ABCD-1; Small-inducible cytokine A22

Product Information

Source	Purification
<i>Pichia</i>	≥ 90% as determined by SDS-PAGE.

Calculated MW	Observed MW
8.68 kDa	10-15 kDa

Endotoxin

< 1 EU/μg of the protein by LAL method.

Formulation

Lyophilized from 0.22 μm filtered solution in PBS, 0.2 M Arginine, pH7.4. Normally 8% trehalose is added as protectant before lyophilization.

Reconstitution

Centrifuge the vial before opening. Reconstitute to a concentration of 0.1-0.5 mg/mL in sterile distilled water. Avoid vortex or vigorously pipetting the protein. For long term storage, it is recommended to add a carrier protein or stabilizer (e.g. 0.1% BSA, 5% HSA, 10% FBS or 5% Trehalose), and aliquot the reconstituted protein solution to minimize free-thaw cycles.

Contact

☎ | 400-999-6126

✉ | cn.market@abclonal.com.cn

🌐 | www.abclonal.com.cn

Background

CCL22 may play a role in the trafficking of activated/effector T-lymphocytes to inflammatory sites and other aspects of activated T-lymphocyte physiology. Also, it is a chemotactic for monocytes, dendritic cells and natural killer cells. CCL22 is a mild chemoattractant for primary activated T-lymphocytes and a potent chemoattractant for chronically activated T-lymphocytes but has no chemattractant activity for neutrophils, eosinophils, and resting T-lymphocytes.

Basic Information

Description

Recombinant Mouse CCL22/MDC Protein by Pichia expression system. The target protein is expressed with sequence (Gly25-Ser92) of Mouse CCL22/MDC (Accession #NP_033163.1) fused with a His tag at the C-terminus..

Bio-Activity

Shipping

The product is shipped at ambient temperature. Upon receipt, store it immediately at the temperature recommended below.

Storage

Store at -20°C. Store the lyophilized protein at -20°C to -80 °C up to 1 year from the date of receipt.

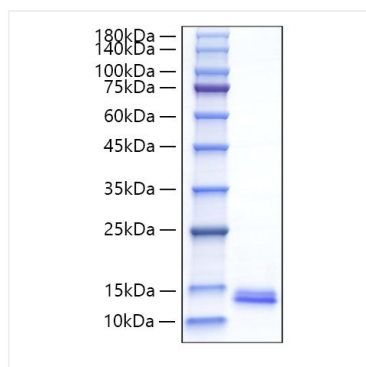
After reconstitution, the protein solution is stable at -20°C for 3 months, at 2-8°C for up to 1 week.

Avoid repeated freeze/thaw cycles.

Operational Notes

For your safety and health, please wear a lab coat and disposable gloves for handling.

Validation Data



Recombinant Mouse CCL22/MDC Protein was determined by SDS-PAGE under reducing conditions with Coomassie Blue.