

# Recombinant Mouse IL-20 Protein

**Catalog No.: RP01951** Recombinant

## Sequence Information

Species	Gene ID	Swiss Prot
Mouse	58181	Q9JKV9

### Tags

N-His

### Synonyms

 IL20; Zcyto10; Interleukin-20; IL-20;  
Cytokine Zcyto10

## Product Information

Source	Purification
HEK293 cells	> 95% by SDS-PAGE.

Calculated MW	Observed MW
18.42 kDa	15-25 kDa

### Endotoxin

&lt; 0.01 EU/μg of the protein by LAL method.

### Formulation

Lyophilized from a 0.22 μm filtered solution of 20mM PB, 500mM NaCl, pH 8.0.

### Reconstitution

Centrifuge the vial before opening. Reconstitute to a concentration of 0.1-0.5 mg/mL in sterile distilled water. Avoid vortex or vigorously pipetting the protein. For long term storage, it is recommended to add a carrier protein or stabilizer (e.g. 0.1% BSA, 5% HSA, 10% FBS or 5% Trehalose), and aliquot the reconstituted protein solution to minimize free-thaw cycles.

## Contact

 | 400-999-6126

 | [cn.market@abclonal.com.cn](mailto:cn.market@abclonal.com.cn)
 | [www.abclonal.com.cn](http://www.abclonal.com.cn)

## Background

Mouse Interleukin 20 (IL-20) was identified by searching sequence databases for translated sequences with a signal sequence and amphipathic helices found in helical cytokines. Based on the human molecule, mouse IL-20 was discovered in a skin library. Mouse IL-20 is synthesized as a 176 amino acid (aa) precursor that contains a 24 aa signal sequence and a 152 aa mature segment. There are no N-linked glycosylation sites and it is doubtful that the native molecule is glycosylated. Although IL-20 is a distant member of the IL-10 family, it functions as a monomer. IL-20 shares less than 40% aa sequence identity with other IL-10 family members. Mouse and human IL-20 are 77% aa identical in the mature segment. IL-20 production has been found in skin and trachea. In particular, activated keratinocytes and, possibly, monocytes are reported to express IL-20. There are two heterodimeric receptor complexes for IL-20. The first complex is composed of IL-20 R alpha and IL-20 R beta. The second complex is composed of IL-22 R and IL-20 R beta. Whereas the IL-22 R/IL-20 R beta complex is shared with IL-24/mda-7, the IL-20 R alpha /IL-20 R beta complex is shared with both IL-19 and IL-24. Little is known about the function of IL-20. It is reported to induce the proliferation of multipotential hematopoietic progenitor cells, direct the differentiation and expansion of keratinocytes, and promote the release of proinflammatory mediators in keratinocytes and other IL-20 receptor expressing cells.

## Basic Information

### Description

Recombinant Mouse IL-20 Protein is produced by HEK293 cells expression system. The target protein is expressed with sequence (Leu25-Leu176) of Mouse IL-20 (Accession #Q9JKV9) fused with a His tag at the N-terminus.

### Bio-Activity

### Storage

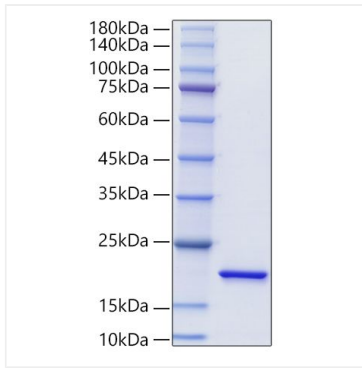
Store at -20°C. Store the lyophilized protein at -20°C to -80°C up to 1 year from the date of receipt.

After reconstitution, the protein solution is stable at -20°C for 3 months, at 2-8°C for up to 1 week.

Avoid repeated freeze/thaw cycles.

## Validation Data

---



Recombinant Mouse IL-20 Protein was determined by SDS-PAGE with Coomassie Blue, showing a band at 15-25 kDa.