

Recombinant Human Gamma-glutamyl hydrolase/GGH Protein

Catalog No.: RP01957 **Recombinant**

Sequence Information

| Species | Gene ID | Swiss Prot |
|---------|---------|------------|
| Human | 8836 | Q92820 |

Tags

N-His

Synonyms

GGH;Gamma-glutamyl hydrolase;
EC:3.4.19.9; Conjugase; GH; Gamma-
Glu-X carboxypeptidase

Product Information

| Source | Purification |
|----------------|--------------------|
| <i>E. coli</i> | > 95% by SDS-PAGE. |

| Calculated MW | Observed MW |
|---------------|-------------|
| 34.93 kDa | 30-35 kDa |

Endotoxin

< 0.1 EU/μg of the protein by LAL method.

Formulation

Lyophilized from a 0.22 μm filtered solution of 20mM HEPES, 150mM NaCl, 1mM TCEP, pH 8.0.

Reconstitution

Centrifuge the vial before opening. Reconstitute to a concentration of 0.1-0.5 mg/mL in sterile distilled water. Avoid vortex or vigorously pipetting the protein. For long term storage, it is recommended to add a carrier protein or stabilizer (e.g. 0.1% BSA, 5% HSA, 10% FBS or 5% Trehalose), and aliquot the reconstituted protein solution to minimize free-thaw cycles.

Contact

☎ | 400-999-6126

✉ | cn.market@abclonal.com.cn

🌐 | www.abclonal.com.cn

Background

Gamma-glutamyl hydrolase/GGH regulates intracellular folates and antifolates such as methotrexate (MTX) for proper nucleotide biosynthesis and antifolate-induced cytotoxicity, respectively. GGH is a ubiquitously-expressed enzyme that regulates intracellular folate metabolism for cell proliferation, DNA synthesis, and repair. cytoplasmic GGH might play a relevant role in the development and progression of invasive breast cancer.

Basic Information

Description

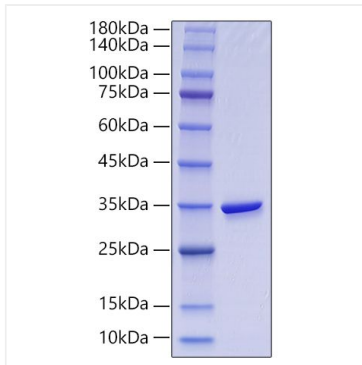
Recombinant Human Gamma-glutamyl hydrolase/GGH Protein is produced by *E. coli* expression system. The target protein is expressed with sequence (Arg25-Asp318) of Human Gamma-glutamyl hydrolase/GGH (Accession #NP_003869.1) fused with a His tag at the N-terminus.

Bio-Activity

Storage

Store at -20°C. Store the lyophilized protein at -20°C to -80 °C up to 1 year from the date of receipt. After reconstitution, the protein solution is stable at -20°C for 3 months, at 2-8°C for up to 1 week. Avoid repeated freeze/thaw cycles.

Validation Data



Recombinant Human Gamma-glutamyl hydrolase/GGH Protein was determined by SDS-PAGE under reducing conditions with Coomassie Blue.