

Recombinant Human CD3E&CD3G Protein

Catalog No.: RP02025 **Recombinant**

Sequence Information

| Species | Gene ID | Swiss Prot |
|---------|---------|-----------------|
| Human | 916&917 | P07766 & P09693 |

Tags

C-hFc

Synonyms

CD3E;IMD18;T3E;TCRE;CD3e molecule;CD3G;CD3-GAMMA;IMD17;T3G;CD3(epsilon+gamma)/CD3E+CD3G

Product Information

| Source | Purification |
|--------------|--------------------|
| HEK293 cells | > 95% by SDS-PAGE. |

Endotoxin

< 0.1 EU/μg of the protein by LAL method.

Formulation

Lyophilized from a 0.2 μm filtered solution of PBS, pH 7.4. Contact us for customized product form or formulation.

Reconstitution

Centrifuge the tube before opening. Reconstitute to a concentration of 0.1-0.5 mg/mL in sterile distilled water. Avoid vortex or vigorously pipetting the protein. For long term storage, it is recommended to add a carrier protein or stabilizer (e.g. 0.1% BSA, 5% HSA, 10% FBS or 5% Trehalose), and aliquot the reconstituted protein solution to minimize free-thaw cycles.

Contact

| | |
|--|---------------------------|
|  | 400-999-6126 |
|  | cn.market@abclonal.com.cn |
|  | www.abclonal.com.cn |

Background

T-cell surface glycoprotein CD3 epsilon & CD3 gamma chain, also known as CD3E & CD3G, are single-pass type I membrane proteins. When antigen presenting cells (APCs) activate T-cell receptor (TCR), TCR-mediated signals are transmitted across the cell membrane by the CD3 chains CD3D, CD3E, CD3G and CD3Z. All CD3 chains contain immunoreceptor tyrosine-based activation motifs (ITAMs) in their cytoplasmic domain.

Basic Information

Description

Recombinant Human CD3 epsilon & CD3 delta Heterodimer Protein is produced by mammalian expression system. The target protein is expressed with sequence (Asp23-Asp126 (CD3E) & Gln23-Ser116 (CD3G)) of human CD3 epsilon & CD3 gamma Heterodimer (Accession #P07766 & P09693) fused with an Fc tag at the C-terminus.

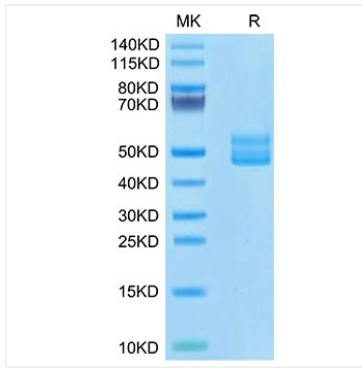
Bio-Activity

Immobilized Human CD3 epsilon & CD3 gamma Heterodimer Protein at 0.5 μg/mL (100 μL/well), dose response curve for Anti-hCD3e mAb with the EC₅₀ of 1.22 μg/mL determined by ELISA.

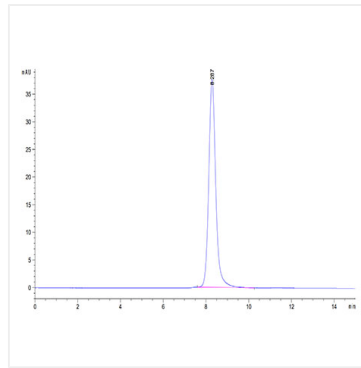
Storage

Store at -20°C. Store the lyophilized protein at -20°C to -80 °C up to 1 year from the date of receipt. After reconstitution, the protein solution is stable at -20°C for 3 months, at 2-8°C for up to 1 week. Avoid repeated freeze/thaw cycles.

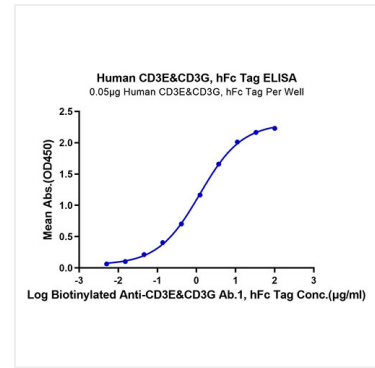
Validation Data



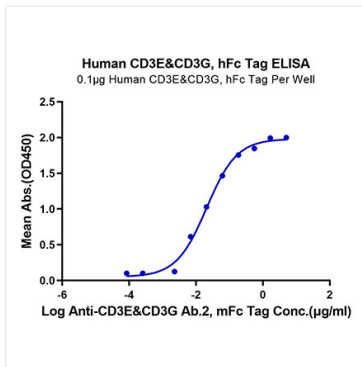
Human CD3E&CD3G/CD3 epsilon&CD3 gamma on Tris-Bis PAGE under reduced condition. The purity is greater than 95%.



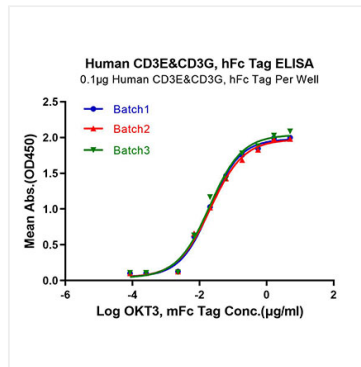
The purity of Human CD3E&CD3G/CD3 Epsilon&CD3 Gamma was greater than 95% as determined by SEC-HPLC.



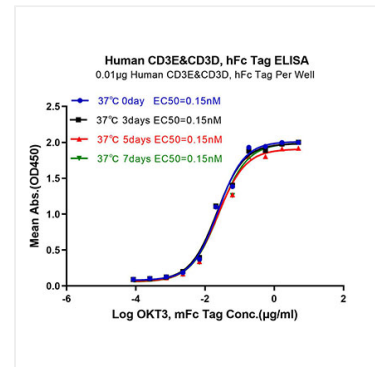
Immobilized Human CD3E&CD3G, hFc Tag at 0.5µg/ml (100µl/Well). Dose response curve for Biotinylated Anti-CD3E&CD3G Ab.1, hFc Tag with the EC₅₀ of 1.22µg/ml determined by ELISA.



Immobilized Human CD3E&CD3G, hFc Tag at 1µg/ml (100µl/Well). Dose response curve for Anti-CD3E&CD3G Ab.2, mFc Tag with the EC₅₀ of 20.7ng/ml determined by ELISA.



Immobilized Human CD3E&CD3G, hFc Tag at 1µg/ml (100µl/Well). Dose response curve for Anti-CD3E&CD3G Ab. (OKT3) , mFc Tag with the EC₅₀ of 20.7/21.0/20.0ng/ml determined by ELISA.



Immobilized Human CD3E&CD3G, hFc Tag at 1µg/ml (100µl/Well). Dose response curve for Anti-CD3E&CD3G Ab. (OKT3) , mFc Tag with the EC₅₀ of 20.7/19.5/20.0/20.7ng/ml determined by ELISA.