

# Recombinant Human Mesothelin Protein

Catalog No.: RP02047LQ **Recombinant**

## Sequence Information

Species	Gene ID	Swiss Prot
Human	10232	Q13421-2

### Tags

Supplied as 0.22um filtered solution in PBS, pH 7.4. Contact us for customized product form or formulation.

### Synonyms

MPF; SMRP

## Product Information

Source	Purification
Mammalian	> 95% by SDS-PAGE.

**Calculated MW**   **Observed MW**

### Endotoxin

< 0.1 EU/μg of the protein by LAL method.

### Formulation

Supplied as 0.22um filtered solution in PBS, pH 7.4. Contact us for customized product form or formulation.

### Reconstitution

## Background

Mesothelin, also known as MSLN, is a protein that in humans is encoded by the MSLN gene. Cloning studies showed that the mesothelin gene encodes a precursor protein that is processed to yield mesothelin which is attached to the cell membrane by a glycosylphosphatidylinositol linkage and a 31-kDa shed fragment named megakaryocyte-potentiating factor (MPF). Although it has been proposed that mesothelin may be involved in cell adhesion, its biological function is not known. A knockout mouse line that lacks mesothelin reproduces and develops normally.

## Basic Information

### Description

Recombinant Human PD-1 Protein is produced by mammalian expression system. The target protein is expressed with sequence (Glu296-Gly580) of human Mesothelin (Accession #Q13421-2) fused with an Fc tag at the C-terminus.

### Bio-Activity

Immobilized Human CA125, His Tag at 5ug/mL (100μL/well), dose response curve for Human MSLN, Fc Tag with the EC<sub>50</sub> of 0.7ug/mL determined by ELISA.

### Storage

This product is stable at ≤ -70° C for up to 1 year from the date of receipt. For optimal storage, aliquot into smaller quantities after centrifugation and store at recommended temperature. Avoid repeated freeze/thaw cycles.

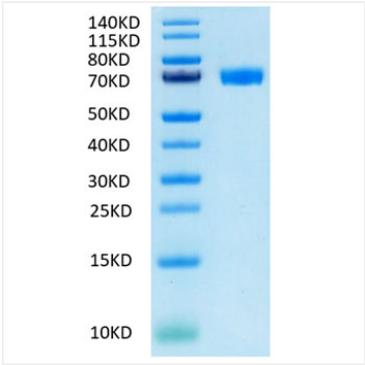
## Contact

☎ | 400-999-6126

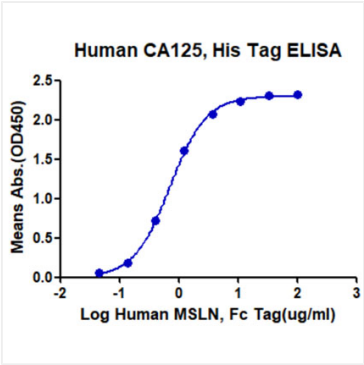
✉ | [cn.market@abclonal.com.cn](mailto:cn.market@abclonal.com.cn)

🌐 | [www.abclonal.com.cn](http://www.abclonal.com.cn)

Validation Data



Recombinant Human Mesothelin Protein was determined by SDS-PAGE with Coomassie Blue, showing a band at 68-72 kDa.



Immobilized Human CA125, His Tag at 5ug/mL (100μL/well), dose response curve for Human MSLN, Fc Tag with the EC<sub>50</sub> of 0.7ug/mL determined by ELISA.